

Datasheet for ABIN929272 **anti-NPFFR2 antibody (C-Term)**



[Go to Product page](#)

1 Image

Overview

Quantity:	100 µL
Target:	NPFFR2 (NPFF2)
Binding Specificity:	C-Term
Reactivity:	Human
Host:	Rabbit
Clonality:	Polyclonal
Conjugate:	This NPFFR2 antibody is un-conjugated
Application:	Western Blotting (WB)

Product Details

Immunogen:	NPFFR2 antibody was raised in rabbit using the C terminal of NPFFR2 as the immunogen
Purification:	Purified

Target Details

Target:	NPFFR2 (NPFF2)
Alternative Name:	NPFFR2 (NPFF2 Products)
Background:	This gene encodes a member of a subfamily of G-protein-coupled neuropeptide receptors. This protein is activated by the neuropeptides A-18-amide (NPAF) and F-8-amide (NPFF) and may function in pain modulation and regulation of the opioid system. Alternative splicing results in multiple transcript variants. Synonyms: Polyclonal NPFFR2 antibody, Anti-NPFFR2 antibody, neuropeptide FF receptor 2 antibody, GPR74 antibody, HLWAR77 antibody, NPFF2 antibody,

Target Details

NPGPR antibody.

Pathways: [cAMP Metabolic Process](#)

Application Details

Application Notes: WB: 0.2-1 µg/mL
Optimal conditions should be determined by the investigator.

Comment: NPFFR2 Blocking Peptide, catalog no. 33R-4249, is also available for use as a blocking control in assays to test for specificity of this NPFFR2 antibody

Restrictions: For Research Use only

Handling

Format: Lyophilized

Concentration: Lot specific

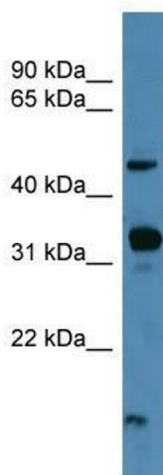
Buffer: Lyophilized powder. Add 50 µL of distilled water. Final antibody concentration is 1 mg/mL in PBS buffer.

Handling Advice: Avoid repeated freeze/thaw cycles.

Storage: 4 °C/-20 °C

Storage Comment: Store at 4 °C, following reconstitution, aliquot and store at -20 °C.

Images



Western Blotting

Image 1. NPFFR2 antibody used at 0.2-1 ug/ml to detect target protein.