

## Datasheet for ABIN929280 **anti-COCH antibody (N-Term)**



[Go to Product page](#)

### 1 Image

#### Overview

|                      |                                     |
|----------------------|-------------------------------------|
| Quantity:            | 100 µL                              |
| Target:              | COCH                                |
| Binding Specificity: | N-Term                              |
| Reactivity:          | Human                               |
| Host:                | Rabbit                              |
| Clonality:           | Polyclonal                          |
| Conjugate:           | This COCH antibody is un-conjugated |
| Application:         | Western Blotting (WB)               |

#### Product Details

|               |  |
|---------------|--|
| Immunogen:    | COCH antibody was raised in rabbit using the N terminal of COCH as the immunogen |
| Purification: | Purified   |

#### Target Details

|                   |  |
|-------------------|--|
| Target:           | COCH   |
| Alternative Name: | COCH ( <a href="#">COCH Products</a> )   |
| Background:       | <p>The protein encoded by this gene is highly conserved in human, mouse, and chicken, showing 94% and 79% amino acid identity of human to mouse and chicken sequences, respectively.</p> <p>Hybridization to this gene was detected in spindle-shaped cells located along nerve fibers between the auditory ganglion and sensory epithelium. These cells accompany neurites at the habenula perforata, the opening through which neurites extend to innervate hair cells. This and</p> |

## Target Details

---

the pattern of expression of this gene in chicken inner ear paralleled the histologic findings of acidophilic deposits, consistent with mucopolysaccharide ground substance, in temporal bones from DFNA9 (autosomal dominant nonsyndromic sensorineural deafness 9) patients. Mutations that cause DFNA9 have been reported in this gene. Alternative splicing results in multiple transcript variants encoding the same protein. Additional splice variants encoding distinct isoforms have been described but their biological validities have not been demonstrated. Synonyms: Polyclonal COCH antibody, Anti-COCH antibody, coagulation factor C homolog, cochlin, Limulus polyphemus antibody, COCH-5B2 antibody, COCH5B2 antibody, DFNA9 antibody.

Pathways: [Sensory Perception of Sound](#)

## Application Details

---

Application Notes: WB: 0.2-1 µg/mL  
Optimal conditions should be determined by the investigator.

Comment: COCH Blocking Peptide, catalog no. 33R-1253, is also available for use as a blocking control in assays to test for specificity of this COCH antibody

Restrictions: For Research Use only

## Handling

---

Format: Lyophilized

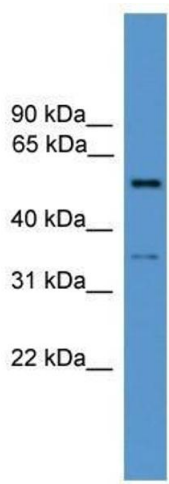
Concentration: Lot specific

Buffer: Lyophilized powder. Add 50 µL of distilled water. Final antibody concentration is 1 mg/mL in PBS buffer.

Handling Advice: Avoid repeated freeze/thaw cycles.

Storage: 4 °C/-20 °C

Storage Comment: Store at 4 °C, following reconstitution, aliquot and store at -20 °C.



### Western Blotting

**Image 1.** COCH antibody used at 0.2-1 ug/ml to detect target protein.