

Datasheet for ABIN929283
anti-GLUL antibody (C-Term)



[Go to Product page](#)

1 Image

Overview

Quantity:	100 µL
Target:	GLUL
Binding Specificity:	C-Term
Reactivity:	Human
Host:	Rabbit
Clonality:	Polyclonal
Conjugate:	This GLUL antibody is un-conjugated
Application:	Western Blotting (WB)

Product Details

Immunogen:	GLUL antibody was raised in rabbit using the C terminal of GLUL as the immunogen
Purification:	Purified

Target Details

Target:	GLUL
Alternative Name:	GLUL (GLUL Products)
Background:	The protein encoded by this gene belongs to the glutamine synthetase family. It catalyzes the synthesis of glutamine from glutamate and ammonia. Glutamine is a main source of energy and is involved in cell proliferation, inhibition of apoptosis, and cell signaling. This gene is expressed during early fetal stages, and plays an important role in controlling body pH by removing ammonia from circulation. Mutations in this gene are associated with congenital

Target Details

glutamine deficiency. Several alternatively spliced transcript variants have been found for this gene. Synonyms: Polyclonal GLUL antibody, Anti-GLUL antibody, glutamate-ammonia ligase, glutamine synthetase antibody, GLNS antibody, GS antibody, PIG43 antibody, PIG59 antibody.

Pathways: [Positive Regulation of Peptide Hormone Secretion](#)

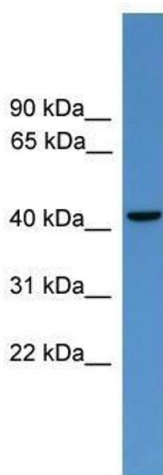
Application Details

Application Notes:	WB: 0.2-1 µg/mL Optimal conditions should be determined by the investigator.
Comment:	GLUL Blocking Peptide, catalog no. 33R-9084, is also available for use as a blocking control in assays to test for specificity of this GLUL antibody
Restrictions:	For Research Use only

Handling

Format:	Lyophilized
Concentration:	Lot specific
Buffer:	Lyophilized powder. Add 50 µL of distilled water. Final antibody concentration is 1 mg/mL in PBS buffer.
Handling Advice:	Avoid repeated freeze/thaw cycles.
Storage:	4 °C/-20 °C
Storage Comment:	Store at 4 °C, following reconstitution, aliquot and store at -20 °C.

Images



Western Blotting

Image 1. GLUL antibody used at 0.2-1 ug/ml to detect target protein.