

Datasheet for ABIN929292

anti-Calcitonin Receptor antibody (C-Term)[Go to Product page](#)**1** Image

Overview

Quantity:	100 µL
Target:	Calcitonin Receptor (CALCR)
Binding Specificity:	C-Term
Reactivity:	Human
Host:	Rabbit
Clonality:	Polyclonal
Conjugate:	This Calcitonin Receptor antibody is un-conjugated
Application:	Western Blotting (WB)

Product Details

Immunogen:	CALCR antibody was raised in rabbit using the C terminal of CALCR as the immunogen
Purification:	Purified

Target Details

Target:	Calcitonin Receptor (CALCR)
Alternative Name:	CALCR (CALCR Products)
Background:	This gene encodes a high affinity receptor for the peptide hormone calcitonin and belongs to a subfamily of seven transmembrane-spanning G protein-coupled receptors. The encoded protein is involved in maintaining calcium homeostasis and in regulating osteoclast-mediated bone resorption. Polymorphisms in this gene have been associated with variations in bone mineral density and onset of osteoporosis. Alternate splicing results in multiple transcript

Target Details

	variants. Synonyms: Polyclonal CALCR antibody, Anti-CALCR antibody, calcitonin receptor antibody, CRT antibody, CTR antibody, CTR1 antibody.
Pathways:	cAMP Metabolic Process

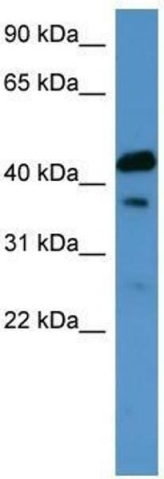
Application Details

Application Notes:	WB: 0.2-1 µg/mL Optimal conditions should be determined by the investigator.
Comment:	CALCR Blocking Peptide, catalog no. 33R-6844, is also available for use as a blocking control in assays to test for specificity of this CALCR antibody
Restrictions:	For Research Use only

Handling

Format:	Lyophilized
Concentration:	Lot specific
Buffer:	Lyophilized powder. Add 50 µL of distilled water. Final antibody concentration is 1 mg/mL in PBS buffer.
Handling Advice:	Avoid repeated freeze/thaw cycles.
Storage:	4 °C/-20 °C
Storage Comment:	Store at 4 °C, following reconstitution, aliquot and store at -20 °C.

Images



Western Blotting

Image 1. CALCR antibody used at 0.2-1 ug/ml to detect target protein.