

## Datasheet for ABIN929302 **anti-RASSF1 antibody (C-Term)**



[Go to Product page](#)

### 1 Image

#### Overview

Quantity:	100 µL
Target:	RASSF1
Binding Specificity:	C-Term
Reactivity:	Human
Host:	Rabbit
Clonality:	Polyclonal
Conjugate:	This RASSF1 antibody is un-conjugated
Application:	Western Blotting (WB)

#### Product Details

Immunogen:	RASSF1 antibody was raised in rabbit using the C terminal of RASSF1 as the immunogen
Purification:	Purified

#### Target Details

Target:	RASSF1
Alternative Name:	RASSF1 ( <a href="#">RASSF1 Products</a> )
Background:	This gene encodes a protein similar to the RAS effector proteins. Loss or altered expression of this gene has been associated with the pathogenesis of a variety of cancers, which suggests the tumor suppressor function of this gene. The inactivation of this gene was found to be correlated with the hypermethylation of its CpG-island promoter region. The encoded protein was found to interact with DNA repair protein XPA. The protein was also shown to inhibit the

## Target Details

accumulation of cyclin D1, and thus induce cell cycle arrest. Seven alternatively spliced transcript variants of this gene encoding distinct isoforms have been reported. Synonyms: Polyclonal RASSF1 antibody, Anti-RASSF1 antibody, Ras association, RalGDS/AF-6 domain family member 1 antibody, 123F2 antibody, NORE2A antibody, RASSF1A antibody, RDA32 antibody, REH3P21 antibody.

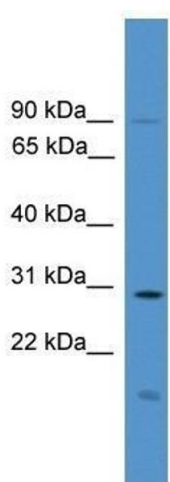
## Application Details

Application Notes:	Optimal conditions should be determined by the investigator.
Comment:	RASSF1 Blocking Peptide, catalog no. 33R-4771, is also available for use as a blocking control in assays to test for specificity of this RASSF1 antibody
Restrictions:	For Research Use only

## Handling

Format:	Lyophilized
Concentration:	Lot specific
Buffer:	Lyophilized powder. Add 50 $\mu$ L of distilled water. Final antibody concentration is 1 mg/mL in PBS buffer.
Handling Advice:	Avoid repeated freeze/thaw cycles.
Storage:	4 °C/-20 °C
Storage Comment:	Store at 4 °C, following reconstitution, aliquot and store at -20 °C.

## Images



### Western Blotting

**Image 1.** Western Blot showing RASSF1 antibody used at a concentration of 1.0  $\mu$ g/ml against Fetal Lung Lysate