

Datasheet for ABIN929304 **anti-RERG antibody (C-Term)**



[Go to Product page](#)

1 Image

Overview

Quantity:	100 µL
Target:	RERG
Binding Specificity:	C-Term
Reactivity:	Human
Host:	Rabbit
Clonality:	Polyclonal
Conjugate:	This RERG antibody is un-conjugated
Application:	Western Blotting (WB)

Product Details

Immunogen:	RERG antibody was raised in rabbit using the C terminal of RERG as the immunogen
Purification:	Purified

Target Details

Target:	RERG
Alternative Name:	RERG (RERG Products)
Background:	RERG, a member of the RAS superfamily of GTPases, inhibits cell proliferation and tumor formation. Synonyms: Polyclonal RERG antibody, Anti-RERG antibody, RAS-like, estrogen-regulated, growth inhibitor antibody, MGC15754 antibody.

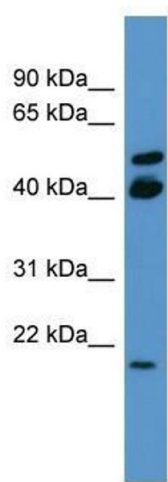
Application Details

Application Notes:	WB: 0.2-1 µg/mL Optimal conditions should be determined by the investigator.
Comment:	REG Blocking Peptide, catalog no. 33R-7274, is also available for use as a blocking control in assays to test for specificity of this REG antibody
Restrictions:	For Research Use only

Handling

Format:	Lyophilized
Concentration:	Lot specific
Buffer:	Lyophilized powder. Add 50 µL of distilled water. Final antibody concentration is 1 mg/mL in PBS buffer.
Handling Advice:	Avoid repeated freeze/thaw cycles.
Storage:	4 °C/-20 °C
Storage Comment:	Store at 4 °C, following reconstitution, aliquot and store at -20 °C.

Images



Western Blotting

Image 1. REG antibody used at 0.2-1 µg/ml to detect target protein.