

Datasheet for ABIN929307
anti-OR1D2 antibody (C-Term)



[Go to Product page](#)

1 Image

Overview

Quantity:	100 µL
Target:	OR1D2
Binding Specificity:	C-Term
Reactivity:	Human
Host:	Rabbit
Clonality:	Polyclonal
Conjugate:	This OR1D2 antibody is un-conjugated
Application:	Western Blotting (WB)

Product Details

Immunogen:	OR1 D2 antibody was raised in rabbit using the C terminal of OR1 2 as the immunogen
Purification:	Purified

Target Details

Target:	OR1D2
Alternative Name:	OR1D2 (OR1D2 Products)
Background:	Olfactory receptors interact with odorant molecules in the nose, to initiate a neuronal response that triggers the perception of a smell. The olfactory receptor proteins are members of a large family of G-protein-coupled receptors (GPCR) arising from single coding-exon genes. Olfactory receptors share a 7-transmembrane domain structure with many neurotransmitter and hormone receptors and are responsible for the recognition and G protein-mediated

Target Details

transduction of odorant signals. The olfactory receptor gene family is the largest in the genome. The nomenclature assigned to the olfactory receptor genes and proteins for this organism is independent of other organisms. Synonyms: Polyclonal OR1D2 antibody, Anti-OR1D2 antibody, olfactory receptor, family 1, subfamily D, member 2 antibody, MGC119942 antibody, MGC119943 antibody, OLFR1 antibody, OR17-4 antibody.

Pathways: [Protein targeting to Nucleus](#)

Application Details

Application Notes: WB: 0.2-1 µg/mL
Optimal conditions should be determined by the investigator.

Comment: OR1D2 Blocking Peptide, catalog no. 33R-8078, is also available for use as a blocking control in assays to test for specificity of this OR1D2 antibody

Restrictions: For Research Use only

Handling

Format: Lyophilized

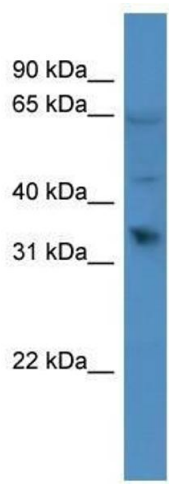
Concentration: Lot specific

Buffer: Lyophilized powder. Add 50 µL of distilled water. Final antibody concentration is 1 mg/mL in PBS buffer.

Handling Advice: Avoid repeated freeze/thaw cycles.

Storage: 4 °C/-20 °C

Storage Comment: Store at 4 °C, following reconstitution, aliquot and store at -20 °C.



Western Blotting

Image 1. OR1D2 antibody used at 0.2-1 ug/ml to detect target protein.