

Datasheet for ABIN929314 **anti-OR2B2 antibody (C-Term)**



[Go to Product page](#)

1 Image

Overview

Quantity:	100 µL
Target:	OR2B2
Binding Specificity:	C-Term
Reactivity:	Human
Host:	Rabbit
Clonality:	Polyclonal
Conjugate:	This OR2B2 antibody is un-conjugated
Application:	Western Blotting (WB)

Product Details

Immunogen:	OR2 B2 antibody was raised in rabbit using the C terminal of OR2 2 as the immunogen
Purification:	Purified

Target Details

Target:	OR2B2
Alternative Name:	OR2B2 (OR2B2 Products)
Background:	Olfactory receptors interact with odorant molecules in the nose, to initiate a neuronal response that triggers the perception of a smell. The olfactory receptor proteins are members of a large family of G-protein-coupled receptors (GPCR) arising from single coding-exon genes. Olfactory receptors share a 7-transmembrane domain structure with many neurotransmitter and hormone receptors and are responsible for the recognition and G protein-mediated

Target Details

transduction of odorant signals. The olfactory receptor gene family is the largest in the genome. The nomenclature assigned to the olfactory receptor genes and proteins for this organism is independent of other organisms. Synonyms: Polyclonal OR2B2 antibody, Anti-OR2B2 antibody, olfactory receptor, family 2, subfamily B, member 2 antibody, OR2B2Q antibody, OR2B9 antibody, OR6-1 antibody, dJ193B12.4 antibody, hs6M1-10 antibody.

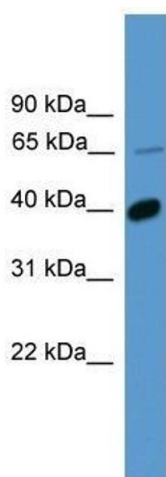
Application Details

Application Notes:	Optimal conditions should be determined by the investigator.
Comment:	OR2B2 Blocking Peptide, catalog no. 33R-3895, is also available for use as a blocking control in assays to test for specificity of this OR2B2 antibody
Restrictions:	For Research Use only

Handling

Format:	Lyophilized
Concentration:	Lot specific
Buffer:	Lyophilized powder. Add 50 μ L of distilled water. Final antibody concentration is 1 mg/mL in PBS buffer.
Handling Advice:	Avoid repeated freeze/thaw cycles.
Storage:	4 °C/-20 °C
Storage Comment:	Store at 4 °C, following reconstitution, aliquot and store at -20 °C.

Images



Western Blotting

Image 1. Western Blot showing OR2B2 antibody used at a concentration of 1.0 μ g/ml against Hela Cell Lysate