

Datasheet for ABIN929318
anti-OR2H1 antibody (C-Term)



[Go to Product page](#)

1 Image

Overview

Quantity:	100 µL
Target:	OR2H1
Binding Specificity:	C-Term
Reactivity:	Human
Host:	Rabbit
Clonality:	Polyclonal
Application:	Western Blotting (WB)

Product Details

Immunogen:	OR2 H1 antibody was raised in rabbit using the C terminal of OR2 1 as the immunogen
Purification:	Purified

Target Details

Target:	OR2H1
Alternative Name:	OR2H1 (OR2H1 Products)

Background: Olfactory receptors interact with odorant molecules in the nose, to initiate a neuronal response that triggers the perception of a smell. The olfactory receptor proteins are members of a large family of G-protein-coupled receptors (GPCR) arising from single coding-exon genes. Olfactory receptors share a 7-transmembrane domain structure with many neurotransmitter and hormone receptors and are responsible for the recognition and G protein-mediated transduction of odorant signals. The olfactory receptor gene family is the largest in the

Target Details

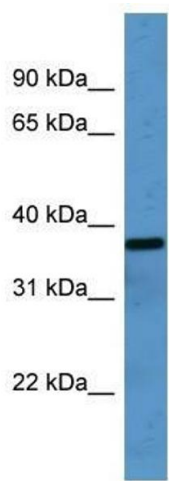
genome. The nomenclature assigned to the olfactory receptor genes and proteins for this organism is independent of other organisms. Synonyms: Polyclonal OR2H1 antibody, Anti-OR2H1 antibody, olfactory receptor, family 2, subfamily H, member 1 antibody, 6M1-16 antibody, HS6M1-16 antibody, OLFR42A-9004-14 antibody, OR2H6 antibody, OR2H8 antibody, OR6-2 antibody, dJ994E9.4 antibody.

Application Details

Application Notes:	WB: 0.2-1 µg/mL Optimal conditions should be determined by the investigator.
Comment:	OR2H1 Blocking Peptide, catalog no. 33R-3901, is also available for use as a blocking control in assays to test for specificity of this OR2H1 antibody
Restrictions:	For Research Use only

Handling

Format:	Lyophilized
Concentration:	Lot specific
Buffer:	Lyophilized powder. Add 50 µL of distilled water. Final antibody concentration is 1 mg/mL in PBS buffer.
Handling Advice:	Avoid repeated freeze/thaw cycles.
Storage:	4 °C/-20 °C
Storage Comment:	Store at 4 °C, following reconstitution, aliquot and store at -20 °C.



Western Blotting

Image 1. OR2H1 antibody used at 0.125 ug/ml to detect target protein.