

## Datasheet for ABIN929324 **anti-OR2L3 antibody (C-Term)**



[Go to Product page](#)

### 1 Image

#### Overview

|                      |                                      |
|----------------------|--------------------------------------|
| Quantity:            | 100 µL                               |
| Target:              | OR2L3                                |
| Binding Specificity: | C-Term                               |
| Reactivity:          | Human                                |
| Host:                | Rabbit                               |
| Clonality:           | Polyclonal                           |
| Conjugate:           | This OR2L3 antibody is un-conjugated |
| Application:         | Western Blotting (WB)                |

#### Product Details

|               |   |
|---------------|---|
| Immunogen:    | OR2 L3 antibody was raised in rabbit using the C terminal of OR2 3 as the immunogen |
| Purification: | Purified  |

#### Target Details

|                   |   |
|-------------------|---|
| Target:           | OR2L3   |
| Alternative Name: | OR2L3 ( <a href="#">OR2L3 Products</a> )  |
| Background:       | Olfactory receptors interact with odorant molecules in the nose, to initiate a neuronal response that triggers the perception of a smell. The olfactory receptor proteins are members of a large family of G-protein-coupled receptors (GPCR) arising from single coding-exon genes. Olfactory receptors share a 7-transmembrane domain structure with many neurotransmitter and hormone receptors and are responsible for the recognition and G protein-mediated |

## Target Details

transduction of odorant signals. The olfactory receptor gene family is the largest in the genome. The nomenclature assigned to the olfactory receptor genes and proteins for this organism is independent of other organisms. Synonyms: Polyclonal OR2L3 antibody, Anti-OR2L3 antibody, olfactory receptor, family 2, subfamily L, member 3 antibody.

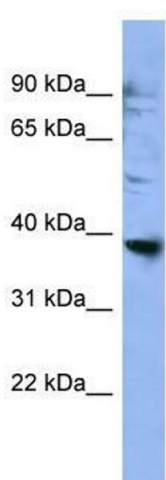
## Application Details

|                    |  |
|--------------------|--|
| Application Notes: | WB: 0.2-1 µg/mL<br>Optimal conditions should be determined by the investigator.  |
| Comment:           | OR2L3 Blocking Peptide, catalog no. 33R-4643, is also available for use as a blocking control in assays to test for specificity of this OR2L3 antibody |
| Restrictions:      | For Research Use only  |

## Handling

|                  |  |
|------------------|--|
| Format:          | Lyophilized  |
| Concentration:   | Lot specific   |
| Buffer:          | Lyophilized powder. Add 50 µL of distilled water. Final antibody concentration is 1 mg/mL in PBS buffer. |
| Handling Advice: | Avoid repeated freeze/thaw cycles.   |
| Storage:         | 4 °C/-20 °C  |
| Storage Comment: | Store at 4 °C, following reconstitution, aliquot and store at -20 °C.                                    |

## Images



### Western Blotting

**Image 1.** OR2L3 antibody used at 0.2-1 ug/ml to detect target protein.