

Datasheet for ABIN929335 **anti-BBS2 antibody (N-Term)**



[Go to Product page](#)

1 Image

Overview

Quantity:	100 µL
Target:	BBS2
Binding Specificity:	N-Term
Reactivity:	Human
Host:	Rabbit
Clonality:	Polyclonal
Conjugate:	This BBS2 antibody is un-conjugated
Application:	Western Blotting (WB)

Product Details

Immunogen:	BBS2 antibody was raised in rabbit using the N terminal of BBS2 as the immunogen
Purification:	Purified

Target Details

Target:	BBS2
Alternative Name:	BBS2 (BBS2 Products)
Background:	This gene is a member of the Bardet-Biedl syndrome (BBS) gene family. Bardet-Biedl syndrome is an autosomal recessive disorder characterized by severe pigmentary retinopathy, obesity, polydactyly, renal malformation and mental retardation. The proteins encoded by BBS gene family members are structurally diverse and the similar phenotypes exhibited by mutations in BBS gene family members is likely due to their shared roles in cilia formation and function.

Target Details

Many BBS proteins localize to the basal bodies, ciliary axonemes, and pericentriolar regions of cells. BBS proteins may also be involved in intracellular trafficking via microtubule-related transport. The protein encoded by this gene forms a multiprotein BBSome complex with six other BBS proteins. Synonyms: Polyclonal BBS2 antibody, Anti-BBS2 antibody, Bardet-Biedl syndrome 2 antibody, BBS antibody, MGC20703 antibody.

Pathways: [Hedgehog Signaling](#)

Application Details

Application Notes: Optimal conditions should be determined by the investigator.

Comment: BBS2 Blocking Peptide, catalog no. 33R-3554, is also available for use as a blocking control in assays to test for specificity of this BBS2 antibody

Restrictions: For Research Use only

Handling

Format: Lyophilized

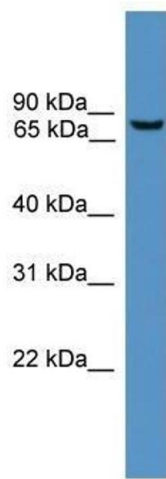
Concentration: Lot specific

Buffer: Lyophilized powder. Add 50 μ L of distilled water. Final antibody concentration is 1 mg/mL in PBS buffer.

Handling Advice: Avoid repeated freeze/thaw cycles.

Storage: 4 °C/-20 °C

Storage Comment: Store at 4 °C, following reconstitution, aliquot and store at -20 °C.



Western Blotting

Image 1. Western Blot showing BBS2 antibody used at a concentration of 1.0 ug/ml against MCF7 Cell Lysate