

Datasheet for ABIN929339  
**anti-OPN1MW antibody (C-Term)**



[Go to Product page](#)

1 Image

## Overview

Quantity:	100 µL
Target:	OPN1MW
Binding Specificity:	C-Term
Reactivity:	Human
Host:	Rabbit
Clonality:	Polyclonal
Conjugate:	This OPN1MW antibody is un-conjugated
Application:	Western Blotting (WB)

## Product Details

Immunogen:	OPN1 MW antibody was raised in rabbit using the C terminal of OPN1 W as the immunogen
Purification:	Purified

## Target Details

Target:	OPN1MW
Alternative Name:	OPN1MW ( <a href="#">OPN1MW Products</a> )
Background:	This gene encodes for a light absorbing visual pigment of the opsin gene family. The encoded protein is called green cone photopigment or medium-wavelength sensitive opsin. Opsins are G-protein coupled receptors with seven transmembrane domains, an N-terminal extracellular domain, and a C-terminal cytoplasmic domain. The long-wavelength opsin gene and multiple copies of the medium-wavelength opsin gene are tandemly arrayed on the X chromosome and

## Target Details

---

frequent unequal recombination and gene conversion may occur between these sequences. X chromosomes may have fusions of the medium- and long-wavelength opsin genes or may have more than one copy of these genes. Defects in this gene are the cause of deutanopic colorblindness. Synonyms: Polyclonal OPN1MW antibody, Anti-OPN1MW antibody, opsin 1, cone pigments, medium-wave-sensitive antibody, CBBM antibody, CBD antibody, GCP antibody, MGC176615 antibody, MGC177321 antibody, MGC198468 antibody, MGC198469 antibody, OPN1MW1 antibody, OPN1MW2 antibody.

Pathways: [Phototransduction](#)

## Application Details

---

Application Notes: WB: 0.2-1 µg/mL  
Optimal conditions should be determined by the investigator.

Comment: OPN1MW Blocking Peptide ABIN5615126 is also available for use as a blocking control in assays to test for specificity of this OPN1MW antibody

Restrictions: For Research Use only

## Handling

---

Format: Lyophilized

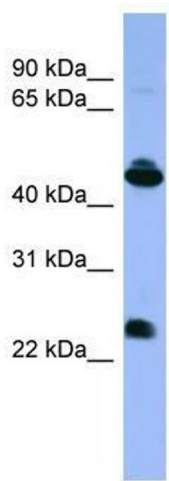
Concentration: Lot specific

Buffer: Lyophilized powder. Add 50 µL of distilled water. Final antibody concentration is 1 mg/mL in PBS buffer.

Handling Advice: Avoid repeated freeze/thaw cycles.

Storage: 4 °C/-20 °C

Storage Comment: Store at 4 °C, following reconstitution, aliquot and store at -20 °C.



### Western Blotting

**Image 1.** Western Blot showing OPN1MW antibody used at a concentration of 1-2 ug/ml to detect its target protein.