

Datasheet for ABIN929341 **anti-Keratin 3 antibody (C-Term)**



[Go to Product page](#)

1 Image

Overview

Quantity:	100 µL
Target:	Keratin 3 (KRT3)
Binding Specificity:	C-Term
Reactivity:	Human
Host:	Rabbit
Clonality:	Polyclonal
Conjugate:	This Keratin 3 antibody is un-conjugated
Application:	Western Blotting (WB)

Product Details

Immunogen:	KRT3 antibody was raised in rabbit using the C terminal of KRT3 as the immunogen
Purification:	Purified

Target Details

Target:	Keratin 3 (KRT3)
Alternative Name:	KRT3 (KRT3 Products)
Background:	The protein encoded by this gene is a member of the keratin gene family. The type II cytokeratins consist of basic or neutral proteins which are arranged in pairs of heterotypic keratin chains coexpressed during differentiation of simple and stratified epithelial tissues. This type II cytokeratin is specifically expressed in the corneal epithelium with family member KRT12 and mutations in these genes have been associated with Meesmann's Corneal Dystrophy. The

Target Details

type II cytokeratins are clustered in a region of chromosome 12q12-q13. Synonyms: Polyclonal KRT3 antibody, Anti-KRT3 antibody, keratin 3 antibody, CK3 antibody, FLJ95909 antibody, K3 antibody.

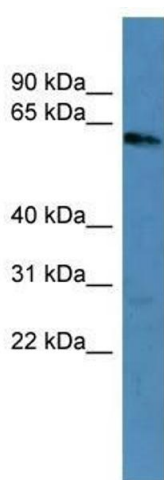
Application Details

Application Notes:	WB: 0.2-1 µg/mL Optimal conditions should be determined by the investigator.
Comment:	KRT3 Blocking Peptide, catalog no. 33R-3585, is also available for use as a blocking control in assays to test for specificity of this KRT3 antibody
Restrictions:	For Research Use only

Handling

Format:	Lyophilized
Concentration:	Lot specific
Buffer:	Lyophilized powder. Add 50 µL of distilled water. Final antibody concentration is 1 mg/mL in PBS buffer.
Handling Advice:	Avoid repeated freeze/thaw cycles.
Storage:	4 °C/-20 °C
Storage Comment:	Store at 4 °C, following reconstitution, aliquot and store at -20 °C.

Images



Western Blotting

Image 1. KRT3 antibody used at 0.2-1 ug/ml to detect target protein.