

Datasheet for ABIN929343 **anti-ALDH1A2 antibody (N-Term)**



[Go to Product page](#)

1 Image

Overview

Quantity:	100 µL
Target:	ALDH1A2
Binding Specificity:	N-Term
Reactivity:	Human
Host:	Rabbit
Clonality:	Polyclonal
Conjugate:	This ALDH1A2 antibody is un-conjugated
Application:	Western Blotting (WB)

Product Details

Immunogen:	ALDH1 A2 antibody was raised in rabbit using the N terminal of ALDH1 2 as the immunogen
Purification:	Purified

Target Details

Target:	ALDH1A2
Alternative Name:	ALDH1A2 (ALDH1A2 Products)
Background:	<p>This protein belongs to the aldehyde dehydrogenase family of proteins. The product of this gene is an enzyme that catalyzes the synthesis of retinoic acid (RA) from retinaldehyde. Retinoic acid, the active derivative of vitamin A (retinol), is a hormonal signaling molecule that functions in developing and adult tissues. The studies of a similar mouse gene suggest that this enzyme and the cytochrome CYP26A1, concurrently establish local embryonic retinoic acid</p>

Target Details

levels which facilitate posterior organ development and prevent spina bifida. Three transcript variants encoding distinct isoforms have been identified for this gene. Synonyms: Polyclonal ALDH1A2 antibody, Anti-ALDH1A2 antibody, aldehyde dehydrogenase 1 family, member A2 antibody, MGC26444 antibody, RALDH(II) antibody, RALDH2 antibody, RALDH2-T antibody.

Pathways: [Retinoic Acid Receptor Signaling Pathway](#)

Application Details

Application Notes: WB: 0.2-1 µg/mL
Optimal conditions should be determined by the investigator.

Comment: ALDH1A2 Blocking Peptide, catalog no. 33R-7431, is also available for use as a blocking control in assays to test for specificity of this ALDH1A2 antibody

Restrictions: For Research Use only

Handling

Format: Lyophilized

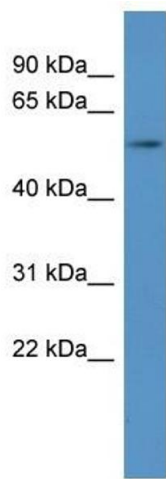
Concentration: Lot specific

Buffer: Lyophilized powder. Add 50 µL of distilled water. Final antibody concentration is 1 mg/mL in PBS buffer.

Handling Advice: Avoid repeated freeze/thaw cycles.

Storage: 4 °C/-20 °C

Storage Comment: Store at 4 °C, following reconstitution, aliquot and store at -20 °C.



Western Blotting

Image 1. ALDH1A2 antibody used at 0.2-1 ug/ml to detect target protein.