

Datasheet for ABIN929346 **anti-IQCB1 antibody (C-Term)**



[Go to Product page](#)

1 Image

Overview

Quantity:	100 µL
Target:	IQCB1
Binding Specificity:	C-Term
Reactivity:	Human
Host:	Rabbit
Clonality:	Polyclonal
Conjugate:	This IQCB1 antibody is un-conjugated
Application:	Western Blotting (WB)

Product Details

Immunogen:	IQCB1 antibody was raised in rabbit using the C terminal of IQCB1 as the immunogen
Purification:	Purified

Target Details

Target:	IQCB1
Alternative Name:	IQCB1 (IQCB1 Products)
Background:	This gene encodes a nephrocystin protein that interacts with calmodulin and the retinitis pigmentosa GTPase regulator protein. The encoded protein has a central coiled-coil region and two calmodulin-binding IQ domains. It is localized to the primary cilia of renal epithelial cells and connecting cilia of photoreceptor cells. The protein is thought to play a role in ciliary function. Defects in this gene result in Senior-Loken syndrome type 5. Alternative splicing

Target Details

results in multiple transcript variants. Synonyms: Polyclonal IQCB1 antibody, Anti-IQCB1 antibody, IQ motif containing B1 antibody, NPHP5 antibody, PIQ antibody, SLSN5 antibody.

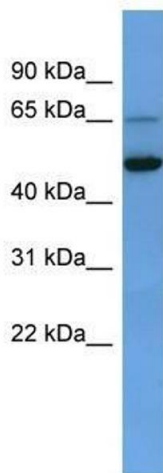
Application Details

Application Notes:	WB: 0.2-1 µg/mL Optimal conditions should be determined by the investigator.
Comment:	IQCB1 Blocking Peptide, catalog no. 33R-5314, is also available for use as a blocking control in assays to test for specificity of this IQCB1 antibody
Restrictions:	For Research Use only

Handling

Format:	Lyophilized
Concentration:	Lot specific
Buffer:	Lyophilized powder. Add 50 µL of distilled water. Final antibody concentration is 1 mg/mL in PBS buffer.
Handling Advice:	Avoid repeated freeze/thaw cycles.
Storage:	4 °C/-20 °C
Storage Comment:	Store at 4 °C, following reconstitution, aliquot and store at -20 °C.

Images



Western Blotting

Image 1. IQCB1 antibody used at 0.2-1 ug/ml to detect target protein.