

Datasheet for ABIN929355 **anti-OPA3 antibody (C-Term)**



[Go to Product page](#)

1 Image

Overview

Quantity:	100 µL
Target:	OPA3
Binding Specificity:	C-Term
Reactivity:	Human
Host:	Rabbit
Clonality:	Polyclonal
Conjugate:	This OPA3 antibody is un-conjugated
Application:	Western Blotting (WB)

Product Details

Immunogen:	OPA3 antibody was raised in rabbit using the C terminal of OPA3 as the immunogen
Purification:	Purified

Target Details

Target:	OPA3
Alternative Name:	OPA3 (OPA3 Products)
Background:	The mouse ortholog of this protein co-purifies with the mitochondrial inner membrane. Mutations in this gene have been shown to result in 3-methylglutaconic aciduria type III and autosomal dominant optic atrophy and cataract. Multiple transcript variants encoding different isoforms have been found for this gene. Synonyms: Polyclonal OPA3 antibody, Anti-OPA3 antibody, optic atrophy 3, autosomal recessive, with chorea and spastic paraplegia antibody,

Target Details

FLJ22187 antibody, FLJ25932 antibody, MGA3 antibody, MGC75494 antibody.

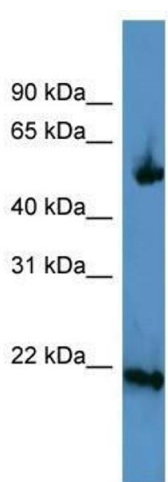
Application Details

Application Notes:	WB: 0.2-1 µg/mL Optimal conditions should be determined by the investigator.
Comment:	OPA3 Blocking Peptide, catalog no. 33R-8892, is also available for use as a blocking control in assays to test for specificity of this OPA3 antibody
Restrictions:	For Research Use only

Handling

Format:	Lyophilized
Concentration:	Lot specific
Buffer:	Lyophilized powder. Add 50 µL of distilled water. Final antibody concentration is 1 mg/mL in PBS buffer.
Handling Advice:	Avoid repeated freeze/thaw cycles.
Storage:	4 °C/-20 °C
Storage Comment:	Store at 4 °C, following reconstitution, aliquot and store at -20 °C.

Images



Western Blotting

Image 1. OPA3 antibody used at 0.2-1 ug/ml to detect target protein.