

## Datasheet for ABIN929363 **anti-CERKL antibody (C-Term)**



[Go to Product page](#)

### 1 Image

#### Overview

Quantity:	100 µL
Target:	CERKL
Binding Specificity:	C-Term
Reactivity:	Human
Host:	Rabbit
Clonality:	Polyclonal
Conjugate:	This CERKL antibody is un-conjugated
Application:	Western Blotting (WB)

#### Product Details

Immunogen:	CERKL antibody was raised in rabbit using the C terminal of CERKL as the immunogen
Purification:	Purified

#### Target Details

Target:	CERKL
Alternative Name:	CERKL ( <a href="#">CERKL Products</a> )
Background:	This gene was initially identified as a locus (RP26) associated with an autosomal recessive form of retinitis pigmentosa (arRP) disease. This gene encodes a protein with ceramide kinase-like domains, however, the protein does not phosphorylate ceramide and its target substrate is currently unknown. This protein may be a negative regulator of apoptosis in photoreceptor cells. Mutations in this gene cause a form of retinitis pigmentosa characterized by autosomal

## Target Details

recessive cone and rod dystrophy (arCRD). Alternative splicing of this gene results in multiple transcript variants encoding different isoforms and non-coding transcripts. Synonyms: Polyclonal CERKL antibody, Anti-CERKL antibody, ceramide kinase-like antibody, RP26 antibody.

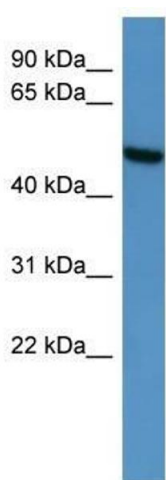
## Application Details

Application Notes:	WB: 0.2-1 µg/mL Optimal conditions should be determined by the investigator.
Comment:	CERKL Blocking Peptide, catalog no. 33R-1539, is also available for use as a blocking control in assays to test for specificity of this CERKL antibody
Restrictions:	For Research Use only

## Handling

Format:	Lyophilized
Concentration:	Lot specific
Buffer:	Lyophilized powder. Add 50 µL of distilled water. Final antibody concentration is 1 mg/mL in PBS buffer.
Handling Advice:	Avoid repeated freeze/thaw cycles.
Storage:	4 °C/-20 °C
Storage Comment:	Store at 4 °C, following reconstitution, aliquot and store at -20 °C.

## Images



### Western Blotting

**Image 1.** CERKL antibody used at 0.2-1 ug/ml to detect target protein.