

Datasheet for ABIN929369
anti-BTBD12 antibody (N-Term)



[Go to Product page](#)

1 Image

Overview

Quantity:	100 µL
Target:	BTBD12
Binding Specificity:	N-Term
Reactivity:	Human
Host:	Rabbit
Clonality:	Polyclonal
Conjugate:	This BTBD12 antibody is un-conjugated
Application:	Western Blotting (WB)

Product Details

Immunogen:	BTBD12 antibody was raised in rabbit using the N terminal of BTBD12 as the immunogen
Purification:	Purified

Target Details

Target:	BTBD12
Alternative Name:	BTBD12 (BTBD12 Products)
Background:	This gene encodes a structure-specific endonuclease subunit. The encoded protein contains a central BTB domain and it forms a multiprotein complex with the ERCC4(XPF)-ERCC1, MUS81-EME1, and SLX1 endonucleases, and also associates with MSH2/MSH3 mismatch repair complex, telomere binding complex TERF2(TRF2)-TERF2IP(RAP1), the protein kinase PLK1 and the uncharacterized protein C20orf94. The multiprotein complex is required for repair of

Target Details

specific types of DNA lesions and is critical for cellular responses to replication fork failure. The encoded protein acts as a docking platform for the assembly of multiple structure-specific endonucleases. Synonyms: Polyclonal BTBD12 antibody, Anti-BTBD12 antibody, BTB, POZ domain containing 12 antibody, KIAA1784 antibody, KIAA1987 antibody, MUS312 antibody, SLX4 antibody.

Pathways: [DNA Damage Repair](#)

Application Details

Application Notes: WB: 0.2-1 µg/mL
Optimal conditions should be determined by the investigator.

Comment: BTBD12 Blocking Peptide, catalog no. 33R-9152, is also available for use as a blocking control in assays to test for specificity of this BTBD12 antibody

Restrictions: For Research Use only

Handling

Format: Lyophilized

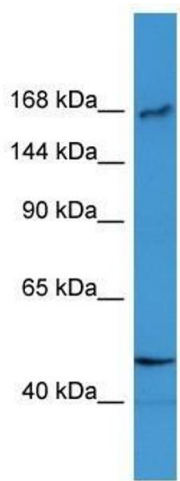
Concentration: Lot specific

Buffer: Lyophilized powder. Add 50 µL of distilled water. Final antibody concentration is 1 mg/mL in PBS buffer.

Handling Advice: Avoid repeated freeze/thaw cycles.

Storage: 4 °C/-20 °C

Storage Comment: Store at 4 °C, following reconstitution, aliquot and store at -20 °C.



Western Blotting

Image 1. Western Blot showing BTBD12 antibody used at a concentration of 1-2 ug/ml to detect its target protein.