

Datasheet for ABIN929379
anti-MAGED2 antibody (N-Term)



[Go to Product page](#)

1 Image

Overview

| | |
|----------------------|---------------------------------------|
| Quantity: | 100 µL |
| Target: | MAGED2 |
| Binding Specificity: | N-Term |
| Reactivity: | Human |
| Host: | Rabbit |
| Clonality: | Polyclonal |
| Conjugate: | This MAGED2 antibody is un-conjugated |
| Application: | Western Blotting (WB) |

Product Details

| | |
|---------------|--|
| Immunogen: | MAGED2 antibody was raised in rabbit using the N terminal of MAGED2 as the immunogen |
| Purification: | Purified |

Target Details

| | |
|-------------------|---|
| Target: | MAGED2 |
| Alternative Name: | MAGED2 (MAGED2 Products) |
| Background: | This gene is a member of the MAGED gene family. While the MAGEA and MAGEB genes are silent in normal tissues with the exception of testis and placenta, the MAGED genes are expressed ubiquitously. The MAGED genes are clustered on chromosome Xp11. This gene is located in Xp11.2, a hot spot for X-linked mental retardation (XLMR). Multiple alternatively spliced transcript variants have been found for this gene, however, the full length nature of |

Target Details

some variants has not been defined. Synonyms: Polyclonal MAGED2 antibody, Anti-MAGED2 antibody, melanoma antigen family D, 2 antibody, 11B6 antibody, BCG1 antibody, HCA10 antibody, JCL-1 antibody, MAGE-D2 antibody, MAGED antibody, MGC8386 antibody.

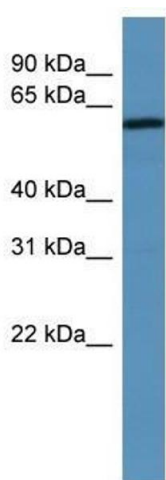
Application Details

| | |
|--------------------|--|
| Application Notes: | WB: 0.2-1 µg/mL Optimal conditions should be determined by the investigator. |
| Comment: | MAGED2 Blocking Peptide, catalog no. 33R-8995, is also available for use as a blocking control in assays to test for specificity of this MAGED2 antibody |
| Restrictions: | For Research Use only |

Handling

| | |
|------------------|--|
| Format: | Lyophilized |
| Concentration: | Lot specific |
| Buffer: | Lyophilized powder. Add 50 µL of distilled water. Final antibody concentration is 1 mg/mL in PBS buffer. |
| Handling Advice: | Avoid repeated freeze/thaw cycles. |
| Storage: | 4 °C/-20 °C |
| Storage Comment: | Store at 4 °C, following reconstitution, aliquot and store at -20 °C. |

Images



Western Blotting

Image 1. MAGED2 antibody used at 0.2-1 ug/ml to detect target protein.