

Datasheet for ABIN929386 **anti-OPN1SW antibody (C-Term)**



[Go to Product page](#)

1 Image

Overview

Quantity:	100 µL
Target:	OPN1SW
Binding Specificity:	C-Term
Reactivity:	Human
Host:	Rabbit
Clonality:	Polyclonal
Conjugate:	This OPN1SW antibody is un-conjugated
Application:	Western Blotting (WB)

Product Details

Immunogen:	OPN1 SW antibody was raised in rabbit using the C terminal of OPN1 W as the immunogen
Purification:	Purified

Target Details

Target:	OPN1SW
Alternative Name:	OPN1SW (OPN1SW Products)
Background:	<p>This gene belongs to the G-protein coupled receptor 1 family, opsin subfamily. It encodes the blue cone pigment gene which is one of three types of cone photoreceptors responsible for normal color vision. Defects in this gene are the cause of tritan color blindness (tritanopia). Affected individuals lack blue and yellow sensory mechanisms while retaining those for red and green. Defective blue vision is characteristic. Synonyms: Polyclonal OPN1SW antibody, Anti-</p>

Target Details

OPN1SW antibody, opsin 1, cone pigments, short-wave-sensitive antibody, BCP antibody, BOP antibody, CBT antibody.

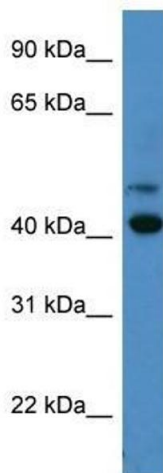
Application Details

Application Notes:	WB: 0.2-1 µg/mL Optimal conditions should be determined by the investigator.
Comment:	OPN1SW Blocking Peptide, catalog no. 33R-8406, is also available for use as a blocking control in assays to test for specificity of this OPN1SW antibody
Restrictions:	For Research Use only

Handling

Format:	Lyophilized
Concentration:	Lot specific
Buffer:	Lyophilized powder. Add 50 µL of distilled water. Final antibody concentration is 1 mg/mL in PBS buffer.
Handling Advice:	Avoid repeated freeze/thaw cycles.
Storage:	4 °C/-20 °C
Storage Comment:	Store at 4 °C, following reconstitution, aliquot and store at -20 °C.

Images



Western Blotting

Image 1. OPN1SW antibody used at 0.2-1 ug/ml to detect target protein.