

Datasheet for ABIN929389  
**anti-MRGPRX3 antibody (C-Term)**



[Go to Product page](#)

1 Image

## Overview

Quantity:	100 µL
Target:	MRGPRX3
Binding Specificity:	C-Term
Reactivity:	Human
Host:	Rabbit
Clonality:	Polyclonal
Conjugate:	This MRGPRX3 antibody is un-conjugated
Application:	Western Blotting (WB)

## Product Details

Immunogen:	MRGPRX3 antibody was raised in rabbit using the C terminal of MRGPRX3 as the immunogen
Purification:	Purified

## Target Details

Target:	MRGPRX3
Alternative Name:	MRGPRX3 ( <a href="#">MRGPRX3 Products</a> )
Background:	This gene encodes a member of the mas-related/sensory neuron specific subfamily of G protein coupled receptors. The encoded protein may be involved in sensory neuron regulation and in the modulation of pain. Synonyms: Polyclonal MRGPRX3 antibody, Anti-MRGPRX3 antibody, MAS-related GPR, member X3 antibody, GPCR antibody, MRGX3 antibody, SNSR1 antibody, SNSR2 antibody.

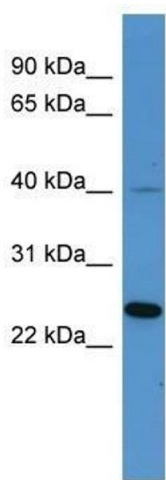
## Application Details

Application Notes:	WB: 0.2-1 µg/mL Optimal conditions should be determined by the investigator.
Comment:	MRGPRX3 Blocking Peptide, catalog no. 33R-9057, is also available for use as a blocking control in assays to test for specificity of this MRGPRX3 antibody
Restrictions:	For Research Use only

## Handling

Format:	Lyophilized
Concentration:	Lot specific
Buffer:	Lyophilized powder. Add 50 µL of distilled water. Final antibody concentration is 1 mg/mL in PBS buffer.
Handling Advice:	Avoid repeated freeze/thaw cycles.
Storage:	4 °C/-20 °C
Storage Comment:	Store at 4 °C, following reconstitution, aliquot and store at -20 °C.

## Images



### Western Blotting

**Image 1.** MRGPRX3 antibody used at 0.2-1 ug/ml to detect target protein.