

Datasheet for ABIN929391 **anti-BASP1 antibody (C-Term)**



[Go to Product page](#)

1 Image

Overview

Quantity:	100 µL
Target:	BASP1
Binding Specificity:	C-Term
Reactivity:	Human
Host:	Rabbit
Clonality:	Polyclonal
Conjugate:	This BASP1 antibody is un-conjugated
Application:	Western Blotting (WB)

Product Details

Immunogen:	BASP1 antibody was raised in rabbit using the C terminal of BASP1 as the immunogen
Purification:	Purified

Target Details

Target:	BASP1
Alternative Name:	BASP1 (BASP1 Products)
Background:	This gene encodes a membrane bound protein with several transient phosphorylation sites and PEST motifs. Conservation of proteins with PEST sequences among different species supports their functional significance. PEST sequences typically occur in proteins with high turnover rates. Immunological characteristics of this protein are species specific. This protein also undergoes N-terminal myristoylation. Synonyms: Polyclonal BASP1 antibody, Anti-BASP1

Target Details

antibody, brain abundant, membrane attached signal protein 1 antibody, CAP-23 antibody, CAP23 antibody, MGC8555 antibody, NAP-22 antibody, NAP22 antibody.

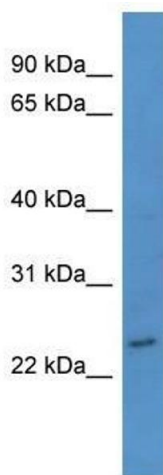
Application Details

Application Notes:	WB: 0.2-1 µg/mL Optimal conditions should be determined by the investigator.
Comment:	BASP1 Blocking Peptide, catalog no. 33R-1413, is also available for use as a blocking control in assays to test for specificity of this BASP1 antibody
Restrictions:	For Research Use only

Handling

Format:	Lyophilized
Concentration:	Lot specific
Buffer:	Lyophilized powder. Add 50 µL of distilled water. Final antibody concentration is 1 mg/mL in PBS buffer.
Handling Advice:	Avoid repeated freeze/thaw cycles.
Storage:	4 °C/-20 °C
Storage Comment:	Store at 4 °C, following reconstitution, aliquot and store at -20 °C.

Images



Western Blotting

Image 1. BASP1 antibody used at 0.2-1 ug/ml to detect target protein.