

Datasheet for ABIN929396
anti-ADCYAP1R1 antibody (C-Term)



[Go to Product page](#)

1 Image

Overview

Quantity:	100 µL
Target:	ADCYAP1R1
Binding Specificity:	C-Term
Reactivity:	Human
Host:	Rabbit
Clonality:	Polyclonal
Conjugate:	This ADCYAP1R1 antibody is un-conjugated
Application:	Western Blotting (WB)

Product Details

Immunogen:	ADCYAP1 R1 antibody was raised in rabbit using the C terminal of ADCYAP1 1 as the immunogen
Purification:	Purified

Target Details

Target:	ADCYAP1R1
Alternative Name:	ADCYAP1R1 (ADCYAP1R1 Products)
Background:	This gene encodes type I adenylate cyclase activating polypeptide receptor, which is a membrane-associated protein and shares significant homology with members of the glucagon/secretin receptor family. This receptor mediates diverse biological actions of adenylate cyclase activating polypeptide 1 and is positively coupled to adenylate cyclase.

Target Details

Multiple alternatively spliced transcript variants encoding distinct isoforms have been identified.
Synonyms: Polyclonal ADCYAP1R1 antibody, Anti-ADCYAP1R1 antibody, adenylate cyclase activating polypeptide 1, pituitary receptor type I antibody, PAC1 antibody, PACAPR antibody, PACAPRI antibody.

Pathways: [Neurotrophin Signaling Pathway](#), [cAMP Metabolic Process](#), [Regulation of Carbohydrate Metabolic Process](#)

Application Details

Application Notes: WB: 0.2-1 µg/mL
Optimal conditions should be determined by the investigator.

Comment: ADCYAP1R1 Blocking Peptide, catalog no. 33R-1289, is also available for use as a blocking control in assays to test for specificity of this ADCYAP1R1 antibody

Restrictions: For Research Use only

Handling

Format: Lyophilized

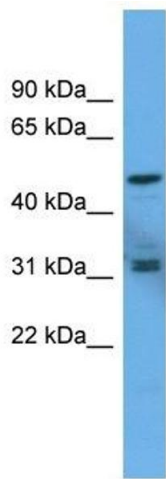
Concentration: Lot specific

Buffer: Lyophilized powder. Add 50 µL of distilled water. Final antibody concentration is 1 mg/mL in PBS buffer.

Handling Advice: Avoid repeated freeze/thaw cycles.

Storage: 4 °C/-20 °C

Storage Comment: Store at 4 °C, following reconstitution, aliquot and store at -20 °C.



Western Blotting

Image 1. Western Blot showing ADCYAP1R1 antibody used at a concentration of 1-2 ug/ml to detect its target protein.