

Datasheet for ABIN929406
anti-ADRA1D antibody (C-Term)



[Go to Product page](#)

1 Image

Overview

Quantity:	100 µL
Target:	ADRA1D
Binding Specificity:	C-Term
Reactivity:	Human
Host:	Rabbit
Clonality:	Polyclonal
Application:	Western Blotting (WB)

Product Details

Immunogen:	ADRA1 D antibody was raised in rabbit using the C terminal of ADRA1 as the immunogen
Purification:	Purified

Target Details

Target:	ADRA1D
Alternative Name:	ADRA1D (ADRA1D Products)
Background:	Alpha-1-adrenergic receptors (alpha-1-ARs) are members of the G protein-coupled receptor superfamily. They activate mitogenic responses and regulate growth and proliferation of many cells. There are 3 alpha-1-AR subtypes: alpha-1A, -1B and -1D, all of which signal through the Gq/11 family of G-proteins and different subtypes show different patterns of activation. This gene encodes alpha-1D-adrenergic receptor. Similar to alpha-1B-adrenergic receptor gene, this gene comprises 2 exons and a single intron that interrupts the coding region. Synonyms:

Target Details

Polyclonal ADRA1D antibody, Anti-ADRA1D antibody, adrenergic, alpha-1D-, receptor antibody, ADRA1 antibody, ADRA1A antibody, ADRA1R antibody, ALPHA1 antibody, DAR antibody, dJ779E11.2 antibody.

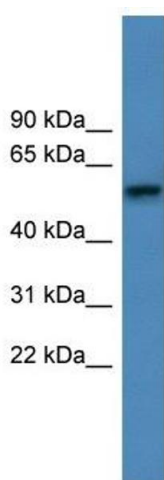
Application Details

Application Notes:	WB: 0.2-1 µg/mL Optimal conditions should be determined by the investigator.
Comment:	ADRA1D Blocking Peptide, catalog no. 33R-1312, is also available for use as a blocking control in assays to test for specificity of this ADRA1D antibody
Restrictions:	For Research Use only

Handling

Format:	Lyophilized
Concentration:	Lot specific
Buffer:	Lyophilized powder. Add 50 µL of distilled water. Final antibody concentration is 1 mg/mL in PBS buffer.
Handling Advice:	Avoid repeated freeze/thaw cycles.
Storage:	4 °C/-20 °C
Storage Comment:	Store at 4 °C, following reconstitution, aliquot and store at -20 °C.

Images



Western Blotting

Image 1. ADRA1D antibody used at 0.2-1 ug/ml to detect target protein.