

Datasheet for ABIN929411
anti-AP2A2 antibody (C-Term)



[Go to Product page](#)

1 Image

Overview

Quantity:	100 µL
Target:	AP2A2
Binding Specificity:	C-Term
Reactivity:	Human
Host:	Rabbit
Clonality:	Polyclonal
Conjugate:	This AP2A2 antibody is un-conjugated
Application:	Western Blotting (WB)

Product Details

Immunogen:	AP2 A2 antibody was raised in rabbit using the C terminal of AP2 2 as the immunogen
Purification:	Purified

Target Details

Target:	AP2A2
Alternative Name:	AP2A2 (AP2A2 Products)
Background:	AP2A2 is a component of the adaptor protein complex 2 (AP-2). AP-2 is involved in clathrin-dependent endocytosis in which cargo proteins are incorporated into vesicles surrounded by clathrin (clathrin-coated vesicles, CCVs) which are destined for fusion with the early endosome. AP-2 also serves as a cargo receptor to selectively sort the membrane proteins involved in receptor-mediated endocytosis. AP-2 seems to play a role in the recycling of synaptic vesicle

Target Details

membranes from the presynaptic surface. AP-2 recognizes Y-X-X-[FILMV] (Y-X-X-Phi) and [ED]-X-X-X-L-[LI] endocytosis signal motifs within the cytosolic tails of transmembrane cargo molecules. AP-2 may also play a role in maintaining normal post-endocytic trafficking through the ARF6-regulated, non-clathrin pathway. The AP-2 alpha subunit binds polyphosphoinositide-containing lipids, positioning AP-2 on the membrane. The AP-2 alpha subunit acts via its C-terminal appendage domain as a scaffolding platform for endocytic accessory proteins. The AP-2 alpha and AP-2 sigma subunits are thought to contribute to the recognition of the [ED]-X-X-X-L-[LI] motif. Synonyms: Polyclonal AP2A2 antibody, Anti-AP2A2 antibody, adaptor-related protein complex 2, alpha 2 subunit antibody, ADTAB antibody, CLAPA2 antibody, HIP9 antibody, HYPJ antibody.

Pathways: [EGFR Signaling Pathway](#), [Neurotrophin Signaling Pathway](#), [EGFR Downregulation](#), [SARS-CoV-2 Protein Interactome](#)

Application Details

Application Notes: WB: 0.2-1 µg/mL
Optimal conditions should be determined by the investigator.

Comment: AP2A2 Blocking Peptide, catalog no. 33R-8256, is also available for use as a blocking control in assays to test for specificity of this AP2A2 antibody

Restrictions: For Research Use only

Handling

Format: Lyophilized

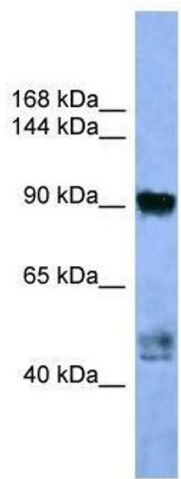
Concentration: Lot specific

Buffer: Lyophilized powder. Add 50 µL of distilled water. Final antibody concentration is 1 mg/mL in PBS buffer.

Handling Advice: Avoid repeated freeze/thaw cycles.

Storage: 4 °C/-20 °C

Storage Comment: Store at 4 °C, following reconstitution, aliquot and store at -20 °C.



Western Blotting

Image 1. Western Blot showing AP2A2 antibody used at a concentration of 1-2 ug/ml to detect its target protein.