

## Datasheet for ABIN929412 **anti-AP1B1 antibody (C-Term)**



[Go to Product page](#)

### 1 Image

#### Overview

Quantity:	100 µL
Target:	AP1B1
Binding Specificity:	C-Term
Reactivity:	Human
Host:	Rabbit
Clonality:	Polyclonal
Conjugate:	This AP1B1 antibody is un-conjugated
Application:	Western Blotting (WB)

#### Product Details

Immunogen:	AP1 B1 antibody was raised in rabbit using the C terminal of AP1 1 as the immunogen
Purification:	Purified

#### Target Details

Target:	AP1B1
Alternative Name:	AP1B1 ( <a href="#">AP1B1 Products</a> )
Background:	Adaptor protein complex 1 is found at the cytoplasmic face of coated vesicles located at the Golgi complex, where it mediates both the recruitment of clathrin to the membrane and the recognition of sorting signals within the cytosolic tails of transmembrane receptors. This complex is a heterotetramer composed of two large, one medium, and one small adaptin subunit. The protein encoded by this gene serves as one of the large subunits of this complex

## Target Details

and is a member of the adaptin protein family. This gene is a candidate meningioma gene.

Synonyms: Polyclonal AP1B1 antibody, Anti-AP1B1 antibody, adaptor-related protein complex 1, beta 1 subunit antibody, ADTB1 antibody, AP105A antibody, BAM22 antibody, CLAPB2 antibody.

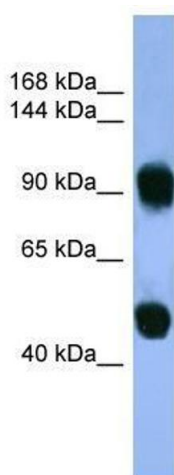
## Application Details

Application Notes:	WB: 0.2-1 µg/mL Optimal conditions should be determined by the investigator.
Comment:	AP1B1 Blocking Peptide, catalog no. 33R-4037, is also available for use as a blocking control in assays to test for specificity of this AP1B1 antibody
Restrictions:	For Research Use only

## Handling

Format:	Lyophilized
Concentration:	Lot specific
Buffer:	Lyophilized powder. Add 50 µL of distilled water. Final antibody concentration is 1 mg/mL in PBS buffer.
Handling Advice:	Avoid repeated freeze/thaw cycles.
Storage:	4 °C/-20 °C
Storage Comment:	Store at 4 °C, following reconstitution, aliquot and store at -20 °C.

## Images



### Western Blotting

**Image 1.** AP1B1 antibody used at 0.2-1 ug/ml to detect target protein.