

Datasheet for ABIN929414

anti-Apelin Receptor antibody (N-Term)[Go to Product page](#)**1** Image

Overview

Quantity:	100 µL
Target:	Apelin Receptor (APLNR)
Binding Specificity:	N-Term
Reactivity:	Human
Host:	Rabbit
Clonality:	Polyclonal
Conjugate:	This Apelin Receptor antibody is un-conjugated
Application:	Western Blotting (WB)

Product Details

Immunogen:	APLNR antibody was raised in rabbit using the N terminal of APLNR as the immunogen
Purification:	Purified

Target Details

Target:	Apelin Receptor (APLNR)
Alternative Name:	APLNR (APLNR Products)
Background:	This gene encodes a member of the G protein-coupled receptor gene family. The encoded protein is related to the angiotensin receptor, but is actually an apelin receptor that inhibits adenylate cyclase activity and plays a counter-regulatory role against the pressure action of angiotensin II by exerting hypertensive effect. It functions in the cardiovascular and central nervous systems, in glucose metabolism, in embryonic and tumor angiogenesis and as a

Target Details

human immunodeficiency virus (HIV-1) coreceptor. Two transcript variants resulting from alternative splicing have been identified. Synonyms: Polyclonal APLNR antibody, Anti-APLNR antibody, apelin receptor antibody, AGTRL1 antibody, APJ antibody, APJR antibody, FLJ90771 antibody, FLJ96609 antibody, HG11 antibody, MGC45246 antibody.

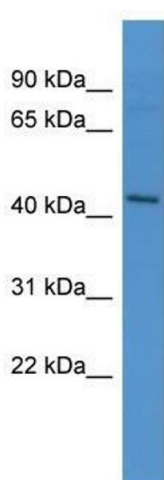
Application Details

Application Notes:	WB: 0.2-1 µg/mL Optimal conditions should be determined by the investigator.
Comment:	APLNR Blocking Peptide, catalog no. 33R-4779, is also available for use as a blocking control in assays to test for specificity of this APLNR antibody
Restrictions:	For Research Use only

Handling

Format:	Lyophilized
Concentration:	Lot specific
Buffer:	Lyophilized powder. Add 50 µL of distilled water. Final antibody concentration is 1 mg/mL in PBS buffer.
Handling Advice:	Avoid repeated freeze/thaw cycles.
Storage:	4 °C/-20 °C
Storage Comment:	Store at 4 °C, following reconstitution, aliquot and store at -20 °C.

Images



Western Blotting

Image 1. Western Blot showing APLNR antibody used at a concentration of 1-2 µg/ml to detect its target protein.