

Datasheet for ABIN929419

anti-CNTF Receptor alpha antibody (C-Term)[Go to Product page](#)**1** Image

Overview

Quantity:	100 µL
Target:	CNTF Receptor alpha (CNTFR)
Binding Specificity:	C-Term
Reactivity:	Human
Host:	Rabbit
Clonality:	Polyclonal
Conjugate:	This CNTF Receptor alpha antibody is un-conjugated
Application:	Western Blotting (WB)

Product Details

Immunogen:	CNTFR antibody was raised in rabbit using the C terminal of CNTFR as the immunogen
Purification:	Purified

Target Details

Target:	CNTF Receptor alpha (CNTFR)
Alternative Name:	CNTFR (CNTFR Products)
Background:	This gene encodes a hematopoietin/interferon-class receptor belonging to the cytokine superfamily of receptors. The encoded gene product represents the CNTF-specific alpha subunit of a heterotrimer forming the CNTF receptor complex, which also includes LIFR and gp130. The receptor is attached to the membrane by a glycosyl-phosphatidylinositol linkage and contains an immunoglobulin-like C2-type domain and a fibronectin type-III domain. Signal

Target Details

transduction requires that CNTF bind first to this alpha component, which permits the recruitment of gp130 and LIFR beta to form the tripartite receptor complex. Signal transduction stimulates gene expression, cell survival or differentiation in a variety of neuronal cell types.

Synonyms: Polyclonal CNTFR antibody, Anti-CNTFR antibody, ciliary neurotrophic factor receptor antibody, MGC1774 antibody.

Pathways: [JAK-STAT Signaling](#), [Feeding Behaviour](#)

Application Details

Application Notes: WB: 0.2-1 µg/mL
Optimal conditions should be determined by the investigator.

Comment: CNTFR Blocking Peptide, catalog no. 33R-1094, is also available for use as a blocking control in assays to test for specificity of this CNTFR antibody

Restrictions: For Research Use only

Handling

Format: Lyophilized

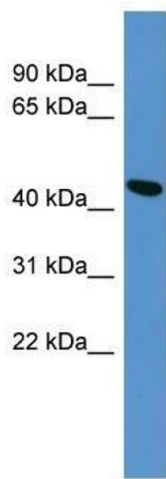
Concentration: Lot specific

Buffer: Lyophilized powder. Add 50 µL of distilled water. Final antibody concentration is 1 mg/mL in PBS buffer.

Handling Advice: Avoid repeated freeze/thaw cycles.

Storage: 4 °C/-20 °C

Storage Comment: Store at 4 °C, following reconstitution, aliquot and store at -20 °C.



Western Blotting

Image 1. CNTFR antibody used at 0.2-1 ug/ml to detect target protein.