

## Datasheet for ABIN929425 **anti-F2RL2 antibody (C-Term)**



[Go to Product page](#)

### 1 Image

#### Overview

Quantity:	100 µL
Target:	F2RL2
Binding Specificity:	C-Term
Reactivity:	Human
Host:	Rabbit
Clonality:	Polyclonal
Conjugate:	This F2RL2 antibody is un-conjugated
Application:	Western Blotting (WB)

#### Product Details

Immunogen:	F2 RL2 antibody was raised in rabbit using the C terminal of F2 L2 as the immunogen
Purification:	Purified

#### Target Details

Target:	F2RL2
Alternative Name:	F2RL2 ( <a href="#">F2RL2 Products</a> )
Background:	Coagulation factor II (thrombin) receptor-like 2 (F2RL2) is a member of the large family of 7-transmembrane-region receptors that couple to guanosine-nucleotide-binding proteins. F2RL2 is also a member of the protease-activated receptor family and activated by thrombin. F2RL2 is activated by proteolytic cleavage of its extracellular amino terminus. The new amino terminus functions as a tethered ligand and activates the receptor. F2RL2 is a cofactor for F2RL3

## Target Details

activation by thrombin. It mediates thrombin-triggered phosphoinositide hydrolysis and is expressed in a variety of tissues. Synonyms: Polyclonal F2RL2 antibody, Anti-F2RL2 antibody, coagulation factor II, thrombin receptor-like 2 antibody, PAR3 antibody.

Pathways: [Cell-Cell Junction Organization, Regulation of G-Protein Coupled Receptor Protein Signaling](#)

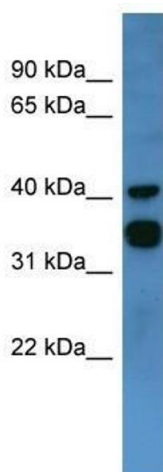
## Application Details

Application Notes:	WB: 0.2-1 µg/mL Optimal conditions should be determined by the investigator.
Comment:	F2RL2 Blocking Peptide, catalog no. 33R-7108, is also available for use as a blocking control in assays to test for specificity of this F2RL2 antibody
Restrictions:	For Research Use only

## Handling

Format:	Lyophilized
Concentration:	Lot specific
Buffer:	Lyophilized powder. Add 50 µL of distilled water. Final antibody concentration is 1 mg/mL in PBS buffer.
Handling Advice:	Avoid repeated freeze/thaw cycles.
Storage:	4 °C/-20 °C
Storage Comment:	Store at 4 °C, following reconstitution, aliquot and store at -20 °C.

## Images



### Western Blotting

**Image 1.** F2RL2 antibody used at 0.2-1 ug/ml to detect target protein.