

Datasheet for ABIN929434
anti-MRPL49 antibody (N-Term)



[Go to Product page](#)

1 Image

Overview

Quantity:	100 µL
Target:	MRPL49
Binding Specificity:	N-Term
Reactivity:	Human
Host:	Rabbit
Clonality:	Polyclonal
Conjugate:	This MRPL49 antibody is un-conjugated
Application:	Western Blotting (WB)

Product Details

Immunogen:	MRPL49 antibody was raised in rabbit using the N terminal of MRPL49 as the immunogen
Purification:	Purified

Target Details

Target:	MRPL49
Alternative Name:	MRPL49 (MRPL49 Products)
Background:	Mammalian mitochondrial ribosomal proteins are encoded by nuclear genes and help in protein synthesis within the mitochondrion. Mitochondrial ribosomes (mitoribosomes) consist of a small 28S subunit and a large 39S subunit. They have an estimated 75% protein to rRNA composition compared to prokaryotic ribosomes, where this ratio is reversed. Another difference between mammalian mitoribosomes and prokaryotic ribosomes is that the latter

Target Details

contain a 5S rRNA. Among different species, the proteins comprising the mitoribosome differ greatly in sequence, and sometimes in biochemical properties, which prevents easy recognition by sequence homology. This gene encodes a 39S subunit protein. This gene and the gene for the HRD1 protein use in their respective 3' UTRs some of the same genomic sequence.

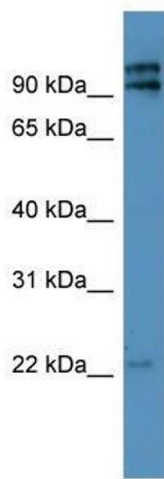
Pseudogenes corresponding to this gene are found on chromosomes 5q and 8p. Synonyms: Polyclonal MRPL49 antibody, Anti-MRPL49 antibody, mitochondrial ribosomal protein L49 antibody, C11orf4 antibody, L49mt antibody, MGC10656 antibody, NOF antibody, NOF1 antibody.

Application Details

Application Notes:	WB: 0.2-1 µg/mL Optimal conditions should be determined by the investigator.
Comment:	MRPL49 Blocking Peptide, catalog no. 33R-4069, is also available for use as a blocking control in assays to test for specificity of this MRPL49 antibody
Restrictions:	For Research Use only

Handling

Format:	Lyophilized
Concentration:	Lot specific
Buffer:	Lyophilized powder. Add 50 µL of distilled water. Final antibody concentration is 1 mg/mL in PBS buffer.
Handling Advice:	Avoid repeated freeze/thaw cycles.
Storage:	4 °C/-20 °C
Storage Comment:	Store at 4 °C, following reconstitution, aliquot and store at -20 °C.



Western Blotting

Image 1. Western Blot showing MRPL49 antibody used at a concentration of 1-2 ug/ml to detect its target protein.