

## Datasheet for ABIN929439 **anti-CA7 antibody (C-Term)**



[Go to Product page](#)

### 1 Image

#### Overview

Quantity:	100 µL
Target:	CA7
Binding Specificity:	C-Term
Reactivity:	Human
Host:	Rabbit
Clonality:	Polyclonal
Conjugate:	This CA7 antibody is un-conjugated
Application:	Western Blotting (WB)

#### Product Details

Immunogen:	CA7 antibody was raised in rabbit using the C terminal of CA7 as the immunogen
Purification:	Purified

#### Target Details

Target:	CA7
Alternative Name:	CA7 ( <a href="#">CA7 Products</a> )
Background:	Carbonic anhydrases are a large family of zinc metalloenzymes that catalyze the reversible hydration of carbon dioxide. They participate in a variety of biological processes, including respiration, calcification, acid-base balance, bone resorption, and the formation of aqueous humor, cerebrospinal fluid, saliva, and gastric acid. They show extensive diversity in tissue distribution and in their subcellular localization. The cytosolic protein encoded by this gene is

## Target Details

predominantly expressed in the salivary glands. Alternative splicing in the coding region results in multiple transcript variants encoding different isoforms. Synonyms: Polyclonal CA7 antibody, Anti-CA7 antibody, carbonic anhydrase VII antibody, CAVII antibody.

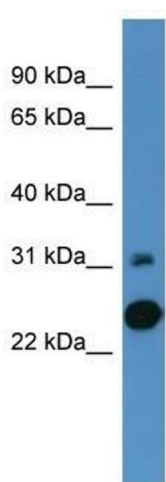
## Application Details

Application Notes:	WB: 0.2-1 µg/mL Optimal conditions should be determined by the investigator.
Comment:	CA7 Blocking Peptide, catalog no. 33R-8630, is also available for use as a blocking control in assays to test for specificity of this CA7 antibody
Restrictions:	For Research Use only

## Handling

Format:	Lyophilized
Concentration:	Lot specific
Buffer:	Lyophilized powder. Add 50 µL of distilled water. Final antibody concentration is 1 mg/mL in PBS buffer.
Handling Advice:	Avoid repeated freeze/thaw cycles.
Storage:	4 °C/-20 °C
Storage Comment:	Store at 4 °C, following reconstitution, aliquot and store at -20 °C.

## Images



### Western Blotting

**Image 1.** CA7 antibody used at 0.2-1 ug/ml to detect target protein.