

Datasheet for ABIN929447
anti-Cathepsin E antibody (C-Term)



[Go to Product page](#)

1 Image

Overview

Quantity:	100 µL
Target:	Cathepsin E (CTSE)
Binding Specificity:	C-Term
Reactivity:	Human
Host:	Rabbit
Clonality:	Polyclonal
Application:	Western Blotting (WB)

Product Details

Immunogen:	CTSE antibody was raised in rabbit using the C terminal of CTSE as the immunogen
Purification:	Purified

Target Details

Target:	Cathepsin E (CTSE)
Alternative Name:	CTSE (CTSE Products)

Background: The protein encoded by this gene is a gastric aspartyl protease that functions as a disulfide-linked homodimer. This protease, which is a member of the peptidase C1 family, has a specificity similar to that of pepsin A and cathepsin D. It is an intracellular proteinase that does not appear to be involved in the digestion of dietary protein and is found in highest concentration in the surface of epithelial mucus-producing cells of the stomach. It is the first aspartic proteinase expressed in the fetal stomach and is found in more than half of gastric

Target Details

cancers. It appears, therefore, to be an oncofetal antigen. Transcript variants utilizing alternative polyadenylation signals and two transcript variants encoding different isoforms exist for this gene. Synonyms: Polyclonal CTSE antibody, Anti-CTSE antibody, cathepsin E antibody, CATE antibody.

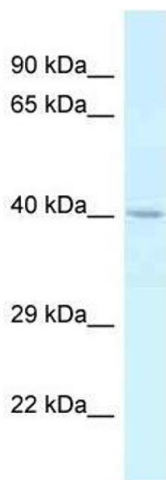
Application Details

Application Notes:	Optimal conditions should be determined by the investigator.
Comment:	CTSE Blocking Peptide, catalog no. 33R-3335, is also available for use as a blocking control in assays to test for specificity of this CTSE antibody
Restrictions:	For Research Use only

Handling

Format:	Lyophilized
Concentration:	Lot specific
Buffer:	Lyophilized powder. Add 50 μ L of distilled water. Final antibody concentration is 1 mg/mL in PBS buffer.
Handling Advice:	Avoid repeated freeze/thaw cycles.
Storage:	4 °C/-20 °C
Storage Comment:	Store at 4 °C, following reconstitution, aliquot and store at -20 °C.

Images



Western Blotting

Image 1. Western Blot showing CTSE antibody used at a concentration of 1.0 μ g/ml against Placenta Lysate