

Datasheet for ABIN929448 **anti-CYP2A6 antibody (C-Term)**



[Go to Product page](#)

1 Image

Overview

Quantity:	100 µL
Target:	CYP2A6
Binding Specificity:	C-Term
Reactivity:	Human
Host:	Rabbit
Clonality:	Polyclonal
Application:	Western Blotting (WB)

Product Details

Immunogen:	CYP2 A6 antibody was raised in rabbit using the C terminal of CYP2 6 as the immunogen
Purification:	Purified

Target Details

Target:	CYP2A6
Alternative Name:	CYP2A6 (CYP2A6 Products)

Background: CYP2A6 is a member of the cytochrome P450 superfamily of enzymes. The cytochrome P450 proteins are monooxygenases which catalyze many reactions involved in drug metabolism and synthesis of cholesterol, steroids and other lipids. This protein localizes to the endoplasmic reticulum and its expression is induced by phenobarbital. The enzyme is known to hydroxylate coumarin, and also metabolizes nicotine, aflatoxin B1, nitrosamines, and some pharmaceuticals. Individuals with certain allelic variants are said to have a poor metabolizer

Target Details

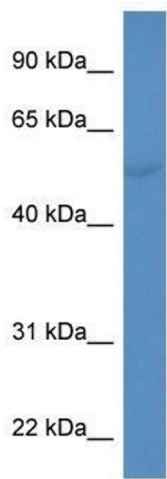
phenotype, meaning they do not efficiently metabolize coumarin or nicotine. This gene is part of a large cluster of cytochrome P450 genes from the CYP2A, CYP2B and CYP2F subfamilies on chromosome 19q. The gene was formerly referred to as CYP2A3, however, it has been renamed CYP2A6. Synonyms: Polyclonal CYP2A6 antibody, Anti-CYP2A6 antibody, cytochrome P450, family 2, subfamily A, polypeptide 6 antibody, CPA6 antibody, CYP2A antibody, CYP2A3 antibody, P450C2A antibody, P450PB antibody.

Application Details

Application Notes:	WB: 0.2-1 µg/mL Optimal conditions should be determined by the investigator.
Comment:	CYP2A6 Blocking Peptide, catalog no. 33R-1182, is also available for use as a blocking control in assays to test for specificity of this CYP2A6 antibody
Restrictions:	For Research Use only

Handling

Format:	Lyophilized
Concentration:	Lot specific
Buffer:	Lyophilized powder. Add 50 µL of distilled water. Final antibody concentration is 1 mg/mL in PBS buffer.
Handling Advice:	Avoid repeated freeze/thaw cycles.
Storage:	4 °C/-20 °C
Storage Comment:	Store at 4 °C, following reconstitution, aliquot and store at -20 °C.



Western Blotting

Image 1. Western Blot showing CYP2A6 antibody used at a concentration of 1-2 ug/ml to detect its target protein.