

Datasheet for ABIN929449
anti-CYP2J2 antibody (C-Term)



[Go to Product page](#)

1 Image

Overview

Quantity:	100 µL
Target:	CYP2J2
Binding Specificity:	C-Term
Reactivity:	Human
Host:	Rabbit
Clonality:	Polyclonal
Application:	Western Blotting (WB)

Product Details

Immunogen:	CYP2 J2 antibody was raised in rabbit using the C terminal of CYP2 2 as the immunogen
Purification:	Purified

Target Details

Target:	CYP2J2
Alternative Name:	CYP2J2 (CYP2J2 Products)
Background:	This gene encodes a member of the cytochrome P450 superfamily of enzymes. The cytochrome P450 proteins are monooxygenases which catalyze many reactions involved in drug metabolism and synthesis of cholesterol, steroids and other lipids. This protein localizes to the endoplasmic reticulum and is thought to be the predominant enzyme responsible for epoxidation of endogenous arachidonic acid in cardiac tissue. Synonyms: Polyclonal CYP2J2 antibody, Anti-CYP2J2 antibody, cytochrome P450, family 2, subfamily J, polypeptide 2

Target Details

antibody, CPJ2 antibody.

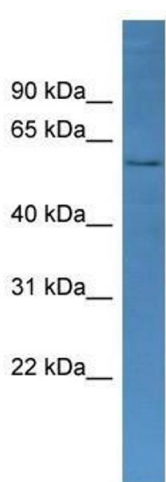
Application Details

Application Notes:	WB: 0.2-1 µg/mL Optimal conditions should be determined by the investigator.
Comment:	CYP2J2 Blocking Peptide, catalog no. 33R-2525, is also available for use as a blocking control in assays to test for specificity of this CYP2J2 antibody
Restrictions:	For Research Use only

Handling

Format:	Lyophilized
Concentration:	Lot specific
Buffer:	Lyophilized powder. Add 50 µL of distilled water. Final antibody concentration is 1 mg/mL in PBS buffer.
Handling Advice:	Avoid repeated freeze/thaw cycles.
Storage:	4 °C/-20 °C
Storage Comment:	Store at 4 °C, following reconstitution, aliquot and store at -20 °C.

Images



Western Blotting

Image 1. Western Blot showing CYP2J2 antibody used at a concentration of 1-2 ug/ml to detect its target protein.