

Datasheet for ABIN930906

**anti-ABCF1 antibody****1** Image[Go to Product page](#)

## Overview

Quantity:	100 µg
Target:	ABCF1
Reactivity:	Human
Host:	Mouse
Clonality:	Monoclonal
Conjugate:	This ABCF1 antibody is un-conjugated
Application:	Immunoprecipitation (IP), Dot Blot (DB)

## Product Details

Immunogen:	ABCF1 antibody was raised in mouse using recombinant Transcription Factor Ap-2 Gamma (Activating Enhancer Binding Protein 2 Gamma) (Tfap2 C)
Clone:	ABC5H06
Isotype:	IgG1
Cross-Reactivity:	Human
Cross-Reactivity (Details):	Other species not studied.
Purification:	Protein G affinity chromatography

## Target Details

Target:	ABCF1
Alternative Name:	ABCF1 ( <a href="#">ABCF1 Products</a> )

## Target Details

---

**Background:** The protein encoded by this gene is a member of the superfamily of ATP-binding cassette (ABC) transporters. ABC proteins transport various molecules across extra- and intra-cellular membranes. ABC genes are divided into seven distinct subfamilies (ABC1, MDR/TAP, MRP, ALD, OABP, GCN20, White). This protein is a member of the GCN20 subfamily. Unlike other members of the superfamily, this protein lacks the transmembrane domains which are characteristic of most ABC transporters. This protein may be regulated by tumor necrosis factor-alpha and play a role in enhancement of protein synthesis and the inflammation process. Synonyms: Monoclonal ABCF1 antibody, Anti-ABCF1 antibody, ATP-binding cassette sub-family F member 1 antibody, ABC27 antibody.

## Application Details

---

**Application Notes:** WB: 0.2-2 µg/mL, IP: 100-500 µg/sample  
Optimal conditions should be determined by the investigator.

**Restrictions:** For Research Use only

## Handling

---

**Concentration:** Lot specific

**Buffer:** ABCF1 antibody in PBS (3.0 mM KCl, 1.5 mM KH<sub>2</sub> PO<sub>4</sub>, 140 mM NaCl, 8.0 mM Na<sub>2</sub> HPO<sub>4</sub> (pH 7.4)) containing 1 % bovine serum albumin (BSA) and 0.05 % sodium azide (NaN<sub>3</sub>).

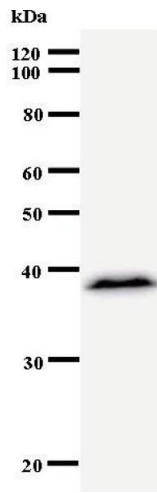
**Preservative:** Sodium azide

**Precaution of Use:** This product contains Sodium Azide: a POISONOUS AND HAZARDOUS SUBSTANCE, which should be handled by trained staff only.

**Handling Advice:** Avoid repeated freeze/thaw cycles.  
Dilute only prior to immediate use.

**Storage:** 4 °C/-20 °C

**Storage Comment:** Store at 2-8 °C for up to one year. We recommend long term storage at -20 °C.



### Western Blotting

Image 1.