

Datasheet for ABIN930909
anti-CBFA2T2 antibody

3 Images



[Go to Product page](#)

Overview

Quantity:	100 µg
Target:	CBFA2T2
Reactivity:	Human
Host:	Mouse
Clonality:	Monoclonal
Application:	Western Blotting (WB), Immunocytochemistry (ICC), Dot Blot (DB), Flow Cytometry (FACS)

Product Details

Immunogen:	CBFA2 T2 antibody was raised in mouse using recombinant Core-Binding Factor,Alpha Subunit 2
Clone:	CBF51134
Isotype:	IgG1
Cross-Reactivity:	Human
Cross-Reactivity (Details):	Other species not studied.
Purification:	Protein G affinity chromatography

Target Details

Target:	CBFA2T2
Alternative Name:	CBFA2T2 (CBFA2T2 Products)
Background:	In acute myeloid leukemia, especially in the M2 subtype, the t(8,21)(q22,q22) translocation is

Target Details

one of the most frequent karyotypic abnormalities. The translocation produces a chimeric gene made up of the 5'-region of the RUNX1 (AML1) gene fused to the 3'-region of the CBFA2T1 (MTG8) gene. The chimeric protein is thought to associate with the nuclear corepressor/histone deacetylase complex to block hematopoietic differentiation. The protein encoded by this gene binds to the AML1-MTG8 complex and may be important in promoting leukemogenesis. Several transcript variants are thought to exist for this gene, but the full-length natures of only three have been described. Synonyms: Monoclonal CBFA2T2 antibody, Anti-CBFA2T2 antibody, Core-binding factor runt domain alpha subunit 2 antibody, MTGR1 antibody, EHT antibody, ZMYND3 antibody.

Application Details

Application Notes: WB: 0.2-2 µg/mL, FC: 0.5-2 µg/sample, ICC: 2-100 µg/mL
Optimal conditions should be determined by the investigator.

Restrictions: For Research Use only

Handling

Concentration: Lot specific

Buffer: CBFA2 T2 antibody in PBS (3.0 mM KCl, 1.5 mM KH₂ PO₄, 140 mM NaCl, 8.0 mM Na₂ HPO₄ (pH 7.4)) containing 1 % bovine serum albumin (BSA) and 0.05 % sodium azide (NaN₃).

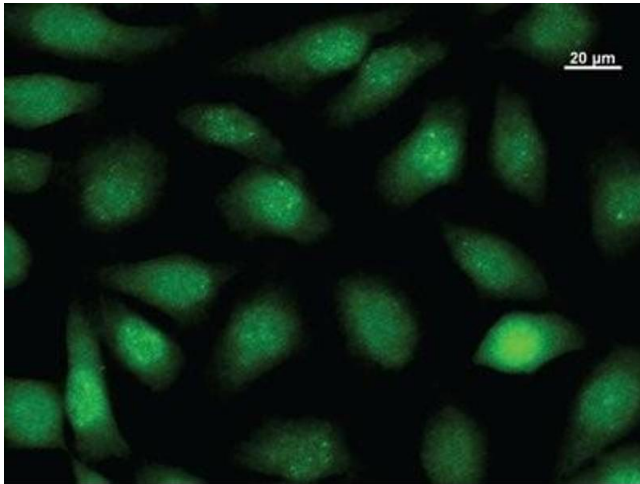
Preservative: Sodium azide

Precaution of Use: This product contains Sodium Azide: a POISONOUS AND HAZARDOUS SUBSTANCE, which should be handled by trained staff only.

Handling Advice: Avoid repeated freeze/thaw cycles.
Dilute only prior to immediate use.

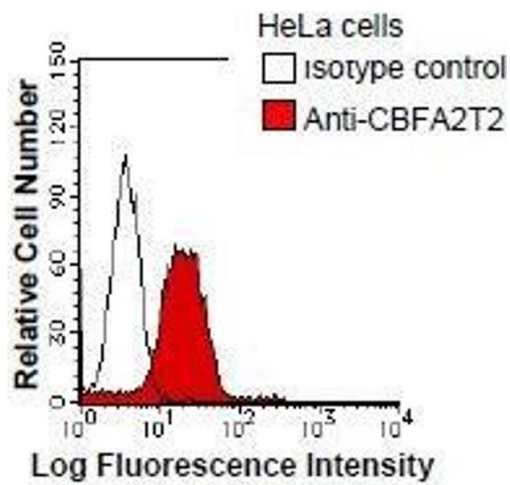
Storage: 4 °C/-20 °C

Storage Comment: Store at 2-8 °C for up to one year. We recommend long term storage at -20 °C.



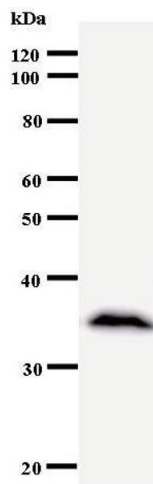
Immunofluorescence

Image 1. Immunostaining analysis in HeLa cells. HeLa cells were fixed with 4% paraformaldehyde and permeabilized with 0.1% Triton X-100 in PBS. The cells were stained with anti-CBFA2T2 antibody.



Flow Cytometry

Image 2. HeLa cells were fixed in 2% paraformaldehyde/PBS and then permeabilized in 90% methanol. Cells were stained with anti-CBFA2T2 antibody (shaded) or isotype control (unshaded) followed by Alexa Fluor 488 conjugated goat anti-mouse IgG.



Western Blotting

Image 3.