

Datasheet for ABIN930918  
**anti-GTF2IRD1 antibody**



[Go to Product page](#)

2 Images

## Overview

Quantity:	100 µg
Target:	GTF2IRD1
Reactivity:	Human
Host:	Mouse
Clonality:	Monoclonal
Conjugate:	This GTF2IRD1 antibody is un-conjugated
Application:	Western Blotting (WB), ELISA, Immunoprecipitation (IP), Immunocytochemistry (ICC)

## Product Details

Immunogen:	GTF2 IRD1 antibody was raised in mouse using recombinant Gtf2 Repeat Domain Containing 1 (Gtf2 rd1)
Clone:	GTF51102
Isotype:	IgG1
Cross-Reactivity:	Human
Cross-Reactivity (Details):	Other species not studied.
Purification:	Protein G affinity chromatography

## Target Details

Target:	GTF2IRD1
Alternative Name:	GTF2IRD1 ( <a href="#">GTF2IRD1 Products</a> )

## Target Details

---

**Background:** The protein encoded by this gene contains five GTF2I-like repeats and each repeat possesses a potential helix-loop-helix (HLH) motif. It may have the ability to interact with other HLH-proteins and function as a transcription factor or as a positive transcriptional regulator under the control of Retinoblastoma protein. This gene is deleted in Williams-Beuren syndrome, a multisystem developmental disorder caused by deletion of multiple genes at 7q11.23. Alternative splicing of this gene generates at least 2 transcript variants. Synonyms: Monoclonal GTF2IRD1 antibody, Anti-GTF2IRD1 antibody, General transcription factor II-I repeat domain-containing protein 1 antibody, GTF3 antibody, RBAP2 antibody, CREAM1 antibody, MUSTRD1 antibody, WBSCR11 antibody, WBSCR12 antibody, hMusTRD1alpha1 antibody.

## Application Details

---

**Application Notes:** WB: 0.2-2 µg/mL, IP: 100-500 µg/sample, ICC: 2-100 µg/mL  
Optimal conditions should be determined by the investigator.

**Restrictions:** For Research Use only

## Handling

---

**Concentration:** Lot specific

**Buffer:** GTF2 IRD1 antibody in PBS (3.0 mM KCl, 1.5 mM KH<sub>2</sub> PO<sub>4</sub>, 140 mM NaCl, 8.0 mM Na<sub>2</sub> HPO<sub>4</sub> (pH 7.4)) containing 1 % bovine serum albumin (BSA) and 0.05 % sodium azide (NaN<sub>3</sub>).

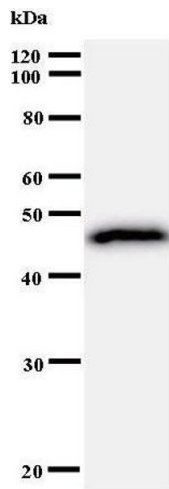
**Preservative:** Sodium azide

**Precaution of Use:** This product contains Sodium Azide: a POISONOUS AND HAZARDOUS SUBSTANCE, which should be handled by trained staff only.

**Handling Advice:** Avoid repeated freeze/thaw cycles.  
Dilute only prior to immediate use.

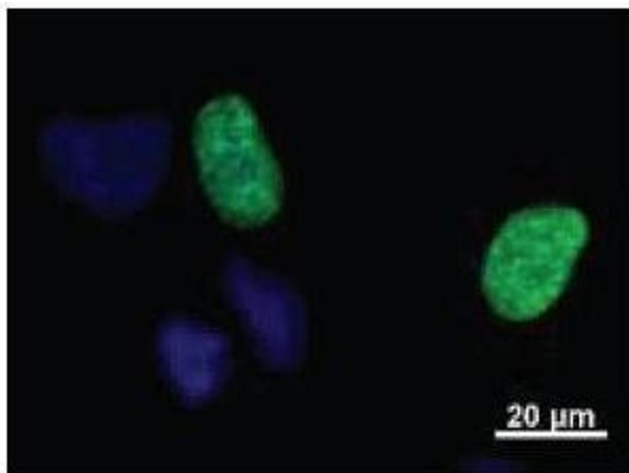
**Storage:** 4 °C/-20 °C

**Storage Comment:** Store at 2-8 °C for up to one year. We recommend long term storage at -20 °C.



### Western Blotting

Image 1.



### Immunofluorescence

**Image 2.** Localization of human GTF2IRD1 in HeLa cells. HeLa cells transiently transfected with the myc-tagged GTF2IRD1 expression vector were fixed and stained with anti-GTF2IRD1 (BMR 00190) and Hoescht 33342. Human GTF2IRD1 fluorescence signals were observed exclusively in nucleus of cells expressing recombinant protein.