

Datasheet for ABIN930927
anti-SNAPC4 antibody



[Go to Product page](#)

1 Image

Overview

Quantity:	100 µg
Target:	SNAPC4
Reactivity:	Human
Host:	Mouse
Clonality:	Monoclonal
Conjugate:	This SNAPC4 antibody is un-conjugated
Application:	Western Blotting (WB), ELISA

Product Details

Immunogen:	SNAPC4 antibody was raised in mouse using recombinant Small Nuclear Rna Activating Complex, Polypeptide 4,190 Kda (Snapc4)
Clone:	SNAAD17A
Isotype:	IgG1
Cross-Reactivity:	Human
Cross-Reactivity (Details):	Other species not studied.
Purification:	Protein G affinity chromatography

Target Details

Target:	SNAPC4
Alternative Name:	SNAPC4 (SNAPC4 Products)

Target Details

Background: Part of the SNAPc complex required for the transcription of both RNA polymerase II and III small-nuclear RNA genes. Binds to the proximal sequence element (PSE), a non-TATA-box basal promoter element common to these 2 types of genes. Recruits TBP and BRF2 to the U6 snRNA TATA box{EC1,EC2}. Synonyms: Monoclonal SNAPC4 antibody, Anti-SNAPC4 antibody, snRNA-activating protein complex subunit 4 antibody, SNAP190 antibody, FLJ13451 antibody, PTFalpha antibody.

Application Details

Application Notes: WB: 0.2-2 µg/mL
Optimal conditions should be determined by the investigator.

Restrictions: For Research Use only

Handling

Concentration: Lot specific

Buffer: SNAPC4 antibody in PBS (3.0 mM KCl, 1.5 mM KH₂ PO₄, 140 mM NaCl, 8.0 mM Na₂ PO₄ (pH 7.4)) containing 1 % bovine serum albumin (BSA) and 0.05 % sodium azide (NaN₃).

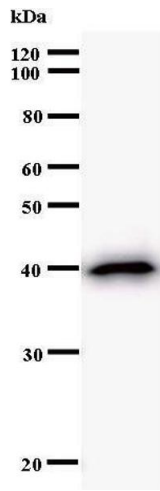
Preservative: Sodium azide

Precaution of Use: This product contains Sodium Azide: a POISONOUS AND HAZARDOUS SUBSTANCE, which should be handled by trained staff only.

Handling Advice: Avoid repeated freeze/thaw cycles.
Dilute only prior to immediate use.

Storage: 4 °C/-20 °C

Storage Comment: Store at 2-8 °C for up to one year. We recommend long term storage at -20 °C.



Western Blotting

Image 1.