

Datasheet for ABIN930934

anti-BRF1 antibody**2** Images[Go to Product page](#)

Overview

Quantity:	100 µg
Target:	BRF1
Reactivity:	Human
Host:	Mouse
Clonality:	Monoclonal
Conjugate:	This BRF1 antibody is un-conjugated
Application:	Immunocytochemistry (ICC), Dot Blot (DB)

Product Details

Immunogen:	BRF1 antibody was raised in mouse using recombinant Brf1 Homolog, Subunit Of Rna Polymerase Iii Transcription Initiation Factor Iiib (S. Cerevisiae) (Brf1)
Clone:	BRF1G2A8
Isotype:	IgG1
Cross-Reactivity:	Human
Cross-Reactivity (Details):	Other species not studied.
Purification:	Protein G affinity chromatography

Target Details

Target:	BRF1
Alternative Name:	BRF1 (BRF1 Products)

Target Details

Background: This gene encodes one of the three subunits of the RNA polymerase III transcription factor complex. This complex plays a central role in transcription initiation by RNA polymerase III on genes encoding tRNA, 5S rRNA, and other small structural RNAs. The gene product belongs to the TF2B family. Three alternatively spliced variants encoding three different isoforms, that function at different promoters transcribed by RNA polymerase III, have been identified. A transcript encoding a fourth isoform has not yet been completely characterized. Synonyms: Monoclonal BRF1 antibody, Anti-BRF1 antibody, Transcription factor IIIB antibody, BRF antibody, hBRF antibody, GTF3B antibody, TAF3C antibody, TAF3B2 antibody, TF3B90 antibody, TAFIII90 antibody, TFIIIB90 antibody, MGC105048 antibody.

Application Details

Application Notes: ICC: 2-100 µg/mL
Optimal conditions should be determined by the investigator.

Restrictions: For Research Use only

Handling

Concentration: Lot specific

Buffer: BRF1 antibody in PBS (3.0 mM KCl, 1.5 mM KH₂ PO₄, 140 mM NaCl, 8.0 mM Na₂ HPO₄ (pH 7.4)) containing 1 % bovine serum albumin (BSA) and 0.05 % sodium azide (NaN₃).

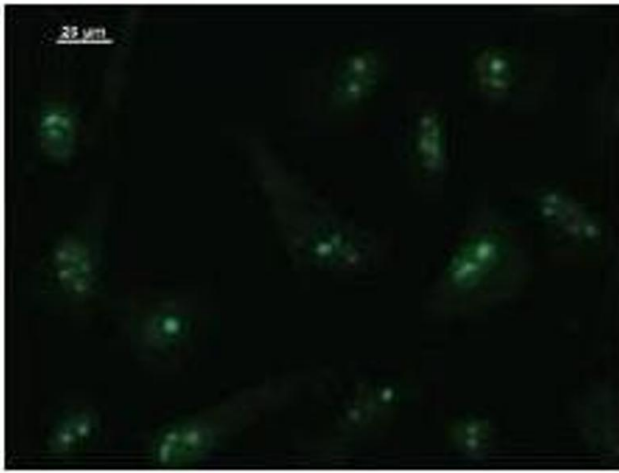
Preservative: Sodium azide

Precaution of Use: This product contains Sodium Azide: a POISONOUS AND HAZARDOUS SUBSTANCE, which should be handled by trained staff only.

Handling Advice: Avoid repeated freeze/thaw cycles.
Dilute only prior to immediate use.

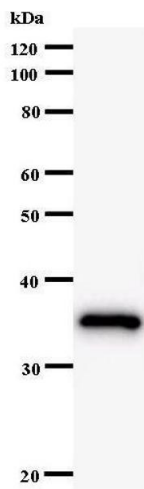
Storage: 4 °C/-20 °C

Storage Comment: Store at 2-8 °C for up to one year. We recommend long term storage at -20 °C.



Immunofluorescence

Image 1. Immunostaining analysis in HeLa cells. HeLa cells were fixed with 4% paraformaldehyde and permeabilized with 0.01% Triton-X100 in PBS. The cells were immunostained with anti-BRF1 antibody.



Western Blotting

Image 2.