

Datasheet for ABIN930944
anti-SMARCA4 antibody[Go to Product page](#)

1 Image

Overview

Quantity:	100 µg
Target:	SMARCA4
Reactivity:	Human
Host:	Mouse
Clonality:	Monoclonal
Conjugate:	This SMARCA4 antibody is un-conjugated
Application:	Dot Blot (DB)

Product Details

Immunogen:	SMARCA4 antibody was raised in mouse using recombinant Swi/Snf Related, Matrix Associated, Actin Dependent Regulator Of Chromatin, Subfamily A, Member 4 (Smarca4)
Clone:	SMAR9G1F9
Isotype:	IgG1
Cross-Reactivity:	Human
Cross-Reactivity (Details):	Other species not studied.
Purification:	Protein G affinity chromatography

Target Details

Target:	SMARCA4
Alternative Name:	SMARCA4 (SMARCA4 Products)

Target Details

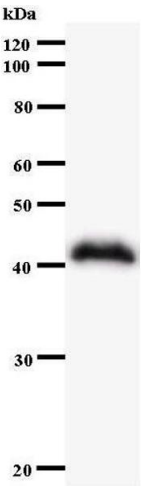
Background:	The protein encoded by this gene is a member of the SWI/SNF family of proteins and is similar to the brahma protein of Drosophila. Members of this family have helicase and ATPase activities and are thought to regulate transcription of certain genes by altering the chromatin structure around those genes. The encoded protein is part of the large ATP-dependent chromatin remodeling complex SNF/SWI, which is required for transcriptional activation of genes normally repressed by chromatin. In addition, this protein can bind BRCA1, as well as regulate the expression of the tumorigenic protein CD44. Multiple transcript variants encoding different isoforms have been found for this gene. Synonyms: Monoclonal SMARCA4 antibody, Anti-SMARCA4 antibody, SWI/SNF related matrix associated actin dependent regulator of chromatin subfamily a member 4 antibody, BRG1 antibody, BAF190 antibody, SNF2L4 antibody, SNF2LB antibody, hSNF2b antibody, SNF2-BETA antibody.
Pathways:	Intracellular Steroid Hormone Receptor Signaling Pathway , Regulation of Intracellular Steroid Hormone Receptor Signaling , Stem Cell Maintenance

Application Details

Application Notes:	Optimal conditions should be determined by the investigator.
Restrictions:	For Research Use only

Handling

Concentration:	Lot specific
Buffer:	SMARCA4 antibody in PBS (3.0 mM KCl, 1.5 mM KH ₂ PO ₄ , 140 mM NaCl, 8.0 mM Na ₂ HPO ₄ (pH 7.4)) containing 1 % bovine serum albumin (BSA) and 0.05 % sodium azide (NaN ₃).
Preservative:	Sodium azide
Precaution of Use:	This product contains Sodium Azide: a POISONOUS AND HAZARDOUS SUBSTANCE, which should be handled by trained staff only.
Handling Advice:	Avoid repeated freeze/thaw cycles. Dilute only prior to immediate use.
Storage:	4 °C/-20 °C
Storage Comment:	Store at 2-8 °C for up to one year. We recommend long term storage at -20 °C.



Western Blotting

Image 1.