

Datasheet for ABIN930948

**anti-LHX2 antibody****2** Images[Go to Product page](#)

## Overview

Quantity:	100 µg
Target:	LHX2
Reactivity:	Human
Host:	Mouse
Clonality:	Monoclonal
Conjugate:	This LHX2 antibody is un-conjugated
Application:	Immunocytochemistry (ICC), Dot Blot (DB)

## Product Details

Immunogen:	LHX2 antibody was raised in mouse using recombinant Lim Homeobox 2
Clone:	LHX2A12G1
Isotype:	IgG1
Cross-Reactivity:	Human
Cross-Reactivity (Details):	Other species not studied.
Purification:	Protein G affinity chromatography

## Target Details

Target:	LHX2
Alternative Name:	LHX2 ( <a href="#">LHX2 Products</a> )
Background:	This gene encodes a protein belonging to a large protein family, members of which carry the

## Target Details

---

LIM domain, a unique cysteine-rich zinc-binding domain. The encoded protein may function as a transcriptional regulator. The protein can recapitulate or rescue phenotypes in *Drosophila* caused by a related protein, suggesting conservation of function during evolution. Synonyms: Monoclonal LHX2 antibody, Anti-LHX2 antibody, LIM/homeobox protein Lhx2 antibody, LH2 antibody, hLhx2 antibody.

Pathways: [Tube Formation](#)

## Application Details

---

Application Notes: ICC: 2-100 µg/mL  
Optimal conditions should be determined by the investigator.

Restrictions: For Research Use only

## Handling

---

Concentration: Lot specific

Buffer: LHX2 antibody in PBS (3.0 mM KCl, 1.5 mM KH<sub>2</sub>PO<sub>4</sub>, 140 mM NaCl, 8.0 mM Na<sub>2</sub>HPO<sub>4</sub> (pH 7.4)) containing 1 % bovine serum albumin (BSA) and 0.05 % sodium azide (NaN<sub>3</sub>).

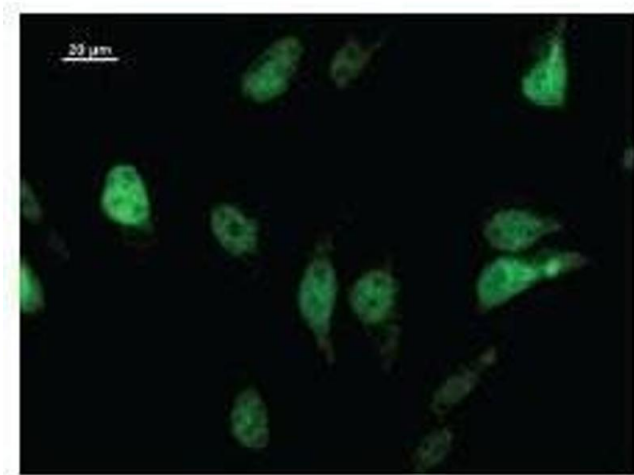
Preservative: Sodium azide

Precaution of Use: This product contains Sodium Azide: a POISONOUS AND HAZARDOUS SUBSTANCE, which should be handled by trained staff only.

Handling Advice: Avoid repeated freeze/thaw cycles.  
Dilute only prior to immediate use.

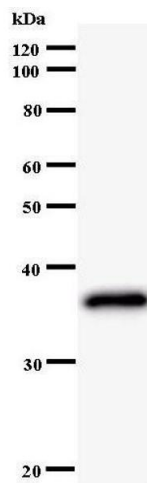
Storage: 4 °C/-20 °C

Storage Comment: Store at 2-8 °C for up to one year. We recommend long term storage at -20 °C.



### Immunofluorescence

**Image 1.** Immunostaining analysis in HeLa cells. HeLa cells were fixed with 4% paraformaldehyde and permeabilized with 0.01% Triton-LHX2 in PBS. The cells were immunostained with anti-GATAD1 antibody.



### Western Blotting

**Image 2.**