

Datasheet for ABIN930953  
**anti-PHTF1 antibody**



[Go to Product page](#)

1 Image

## Overview

Quantity:	100 µg
Target:	PHTF1
Reactivity:	Human
Host:	Mouse
Clonality:	Monoclonal
Conjugate:	This PHTF1 antibody is un-conjugated
Application:	Dot Blot (DB)

## Product Details

Immunogen:	PHTF1 antibody was raised in mouse using recombinant Putative Homeodomain Transcription Factor 1
Clone:	PHTF1R8
Isotype:	IgG1
Cross-Reactivity:	Human
Cross-Reactivity (Details):	Other species not studied.
Purification:	Protein G affinity chromatography

## Target Details

Target:	PHTF1
Alternative Name:	PHTF1 ( <a href="#">PHTF1 Products</a> )

## Target Details

---

Background: This gene may play a role in transcription regulation. Synonyms: Monoclonal PHTF1 antibody, Anti-PHTF1 antibody, Putative homeodomain transcription factor 1 antibody, PHTF antibody.

## Application Details

---

Application Notes: Optimal conditions should be determined by the investigator.

Restrictions: For Research Use only

## Handling

---

Concentration: Lot specific

Buffer: PHTF1 antibody in PBS (3.0 mM KCl, 1.5 mM KH<sub>2</sub> PO<sub>4</sub>, 140 mM NaCl, 8.0 mM Na<sub>2</sub> HPO<sub>4</sub> (pH 7.4)) containing 1 % bovine serum albumin (BSA) and 0.05 % sodium azide (NaN<sub>3</sub>).

Preservative: Sodium azide

Precaution of Use: This product contains Sodium Azide: a POISONOUS AND HAZARDOUS SUBSTANCE, which should be handled by trained staff only.

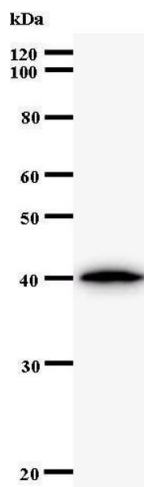
Handling Advice: Avoid repeated freeze/thaw cycles.  
Dilute only prior to immediate use.

Storage: 4 °C/-20 °C

Storage Comment: Store at 2-8 °C for up to one year. We recommend long term storage at -20 °C.

## Images

---



### Western Blotting

Image 1.