

Datasheet for ABIN930975

**anti-E2F6 antibody****2** Images[Go to Product page](#)

## Overview

Quantity:	50 µg
Target:	E2F6
Reactivity:	Human
Host:	Mouse
Clonality:	Monoclonal
Conjugate:	This E2F6 antibody is un-conjugated
Application:	Immunocytochemistry (ICC), Dot Blot (DB)

## Product Details

Immunogen:	E2 F6 antibody was raised in mouse using recombinant Human E2 Transcription Factor 6, Transcript Variant A
Clone:	E2F6B9E2
Isotype:	IgG1
Cross-Reactivity:	Human
Cross-Reactivity (Details):	Other species not studied.
Purification:	Protein G affinity chromatography

## Target Details

Target:	E2F6
Alternative Name:	E2F6 ( <a href="#">E2F6 Products</a> )

## Target Details

---

**Background:** This gene encodes a member of the E2F transcription factor protein family. E2F family members play a crucial role in control of the cell cycle and of the action of tumor suppressor proteins. They are also a target of the transforming proteins of small DNA tumor viruses. Many E2F proteins contain several evolutionarily conserved domains: a DNA binding domain, a dimerization domain which determines interaction with the differentiation regulated transcription factor proteins (DP), a transactivation domain enriched in acidic amino acids, and a tumor suppressor protein association domain which is embedded within the transactivation domain. The encoded protein of this gene is atypical because it lacks the transactivation and tumor suppressor protein association domains. It contains a modular suppression domain and is an inhibitor of E2F-dependent transcription. The protein is part of a multimeric protein complex that contains a histone methyltransferase and the transcription factors Mga and Max. Synonyms: Monoclonal E2F6 antibody, Anti-E2F6 antibody, E2F transcription factor 6 antibody, E2F-6 antibody.

## Application Details

---

**Application Notes:** ICC: 2-100 µg/mL  
Optimal conditions should be determined by the investigator.

**Restrictions:** For Research Use only

## Handling

---

**Concentration:** Lot specific

**Buffer:** E2 F6 antibody in PBS (3.0 mM KCl, 1.5 mM KH<sub>2</sub> PO<sub>4</sub>, 140 mM NaCl, 8.0 mM Na<sub>2</sub> HPO<sub>4</sub> (pH 7.4)) containing 1 % bovine serum albumin (BSA) and 0.05 % sodium azide (NaN<sub>3</sub>).

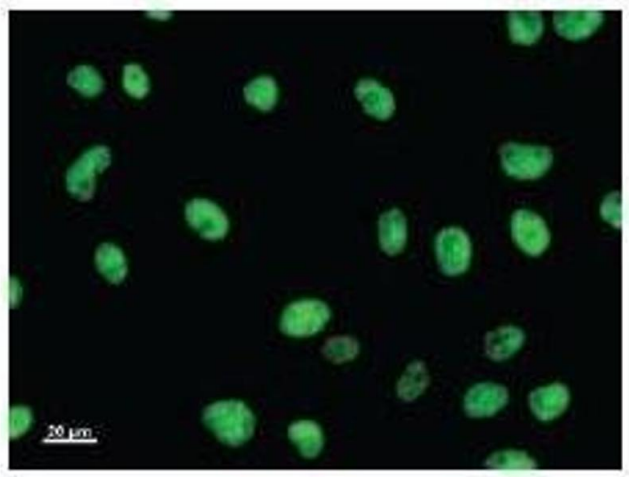
**Preservative:** Sodium azide

**Precaution of Use:** This product contains Sodium Azide: a POISONOUS AND HAZARDOUS SUBSTANCE, which should be handled by trained staff only.

**Handling Advice:** Avoid repeated freeze/thaw cycles.  
Dilute only prior to immediate use.

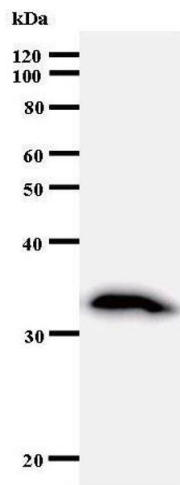
**Storage:** 4 °C/-20 °C

**Storage Comment:** Store at 2-8 °C for up to one year. We recommend long term storage at -20 °C.



### Immunofluorescence

**Image 1.** Immunostaining analysis in HeLa cells. HeLa cells were fixed with 4% paraformaldehyde and permeabilized with 0.01% Triton-X100 in PBS. The cells were immunostained with anti-E2F6 antibody.



### Western Blotting

**Image 2.**