

Datasheet for ABIN930977

anti-BTG1 antibody[Go to Product page](#)**1** Image

Overview

Quantity:	100 µg
Target:	BTG1
Reactivity:	Human
Host:	Mouse
Clonality:	Monoclonal
Conjugate:	This BTG1 antibody is un-conjugated
Application:	Dot Blot (DB)

Product Details

Immunogen:	BTG1 antibody was raised in mouse using recombinant Human B-Cell Translocation Gene 1, Anti-Proliferative (Btg1)
Clone:	2095C1a
Isotype:	IgG1
Cross-Reactivity:	Human
Cross-Reactivity (Details):	Other species not studied.
Purification:	Protein G affinity chromatography

Target Details

Target:	BTG1
Alternative Name:	BTG1 (BTG1 Products)

Target Details

Background: This gene is a member of an anti-proliferative gene family that regulates cell growth and differentiation. Expression of this gene is highest in the G0/G1 phases of the cell cycle and downregulated when cells progressed through G1. The encoded protein interacts with several nuclear receptors, and functions as a coactivator of cell differentiation. This locus has been shown to be involved in a chromosomal translocation in a case of B-cell chronic lymphocytic leukemia. Synonyms: Monoclonal BTG1 antibody, Anti-BTG1 antibody, B-cell translocation gene 1 antibody.

Pathways: [Regulation of Muscle Cell Differentiation, Skeletal Muscle Fiber Development](#)

Application Details

Application Notes: Optimal conditions should be determined by the investigator.

Restrictions: For Research Use only

Handling

Concentration: Lot specific

Buffer: BTG1 antibody in PBS (3.0 mM KCl, 1.5 mM KH₂ PO₄, 140 mM NaCl, 8.0 mM Na₂ HPO₄ (pH 7.4)) containing 1 % bovine serum albumin (BSA) and 0.05 % sodium azide (NaN₃).

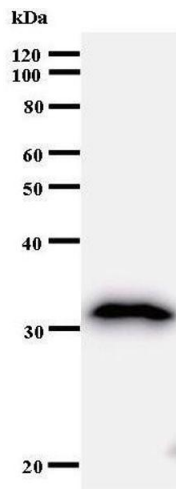
Preservative: Sodium azide

Precaution of Use: This product contains Sodium Azide: a POISONOUS AND HAZARDOUS SUBSTANCE, which should be handled by trained staff only.

Handling Advice: Avoid repeated freeze/thaw cycles.
Dilute only prior to immediate use.

Storage: 4 °C/-20 °C

Storage Comment: Store at 2-8 °C for up to one year. We recommend long term storage at -20 °C.



Western Blotting

Image 1.