

Datasheet for ABIN930978
anti-RPF2 antibody



[Go to Product page](#)

2 Images

Overview

Quantity:	100 µg
Target:	RPF2
Reactivity:	Human
Host:	Mouse
Clonality:	Monoclonal
Conjugate:	This RPF2 antibody is un-conjugated
Application:	Western Blotting (WB), Dot Blot (DB), Immunocytochemistry (ICC)

Product Details

Immunogen:	BXDC1 antibody was raised in mouse using recombinant Human Brix Domain Containing 1 (Bxdc1)
Clone:	2099C7a
Isotype:	IgG1
Cross-Reactivity:	Human
Cross-Reactivity (Details):	Other species not studied.
Purification:	Protein G affinity chromatography

Target Details

Target:	RPF2
Alternative Name:	BXDC1 (RPF2 Products)

Target Details

Background: BXDC1 (Brix domain-containing protein 1) is a 306 amino acid protein encoded by the human gene BXDC1. BXDC1 is a nuclear protein that contains one Brix domain. Brix domain-containing proteins represent a family of proteins involved in the biogenesis of large ribosomal subunits. The Brix domain is a region with homology to the yeast protein Pitx1 (ribosome biogenesis protein BRX1). Pitx1 is part of a complex that includes RPF1, RPF2 and SSF1 or SSF2. This complex is required for the biogenesis of the 60S ribosomal subunit. Synonyms: Monoclonal BXDC1 antibody, Anti-BXDC1 antibody, Ribosome production factor 2 homolog antibody, RPF2 antibody, FLJ21087 antibody, bA397G5.4 antibody.

Pathways: [Ribonucleoprotein Complex Subunit Organization](#), [Ribosome Assembly](#)

Application Details

Application Notes: WB: 0.2-2 µg/mL, ICC: 2-100 µg/mL
Optimal conditions should be determined by the investigator.

Restrictions: For Research Use only

Handling

Concentration: Lot specific

Buffer: BXDC1 antibody in PBS (3.0 mM KCl, 1.5 mM KH₂PO₄, 140 mM NaCl, 8.0 mM Na₂HPO₄ (pH 7.4)) containing 1 % bovine serum albumin (BSA) and 0.05 % sodium azide (NaN₃).

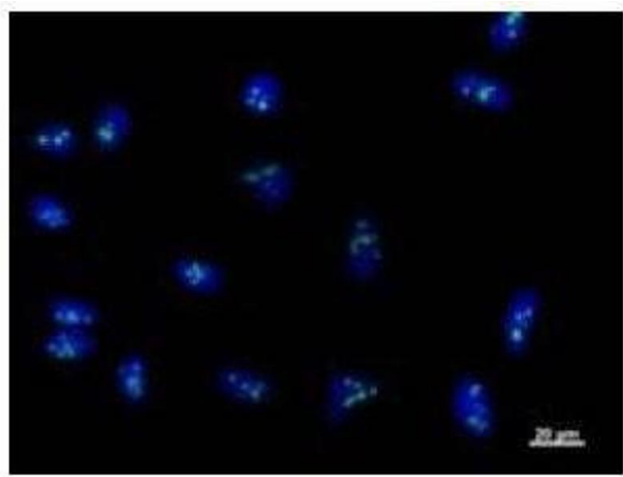
Preservative: Sodium azide

Precaution of Use: This product contains Sodium Azide: a POISONOUS AND HAZARDOUS SUBSTANCE, which should be handled by trained staff only.

Handling Advice: Avoid repeated freeze/thaw cycles.
Dilute only prior to immediate use.

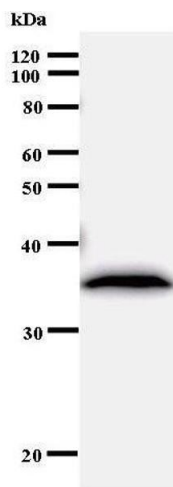
Storage: 4 °C/-20 °C

Storage Comment: Store at 2-8 °C for up to one year. We recommend long term storage at -20 °C.



Immunofluorescence

Image 1. Immunostaining analysis in HeLa cells. HeLa cells were fixed with 4% paraformaldehyde and permeabilized with 0.01% Triton-X100 in PBS. The cells were immunostained with anti-BXDC1 antibody.



Western Blotting

Image 2.