

Datasheet for ABIN930988

anti-BARD1 antibody**1** Image[Go to Product page](#)

Overview

Quantity:	50 µg
Target:	BARD1
Reactivity:	Human
Host:	Mouse
Clonality:	Monoclonal
Conjugate:	This BARD1 antibody is un-conjugated
Application:	Western Blotting (WB), Immunoprecipitation (IP), Dot Blot (DB)

Product Details

Immunogen:	BARD1 antibody was raised in mouse using recombinant Human Brca1 Associated Ring Domain 1 (Bard1)
Clone:	2059C4a
Isotype:	IgG1
Cross-Reactivity:	Human
Cross-Reactivity (Details):	Other species not studied.
Purification:	Protein G affinity chromatography

Target Details

Target:	BARD1
Alternative Name:	BARD1 (BARD1 Products)

Target Details

Background: BARD1 interacts with the N-terminal region of BRCA1. In addition to its ability to bind BRCA1 in vivo and in vitro, BARD1 shares homology with the 2 most conserved regions of BRCA1: the N-terminal RING motif and the C-terminal BRCT domain. The RING motif is a cysteine-rich sequence found in a variety of proteins that regulate cell growth, including the products of tumor suppressor genes and dominant protooncogenes. The BARD1 protein also contains 3 tandem ankyrin repeats. The BARD1/BRCA1 interaction is disrupted by tumorigenic amino acid substitutions in BRCA1, implying that the formation of a stable complex between these proteins may be an essential aspect of BRCA1 tumor suppression. BARD1 may be the target of oncogenic mutations in breast or ovarian cancer. Synonyms: Monoclonal BARD1 antibody, Anti-BARD1 antibody, BRCA1 associated RING domain gene 1 antibody.

Pathways: [DNA Damage Repair](#)

Application Details

Application Notes: WB: 0.2-2 µg/mL, IP: 100-500 µg/sample
Optimal conditions should be determined by the investigator.

Restrictions: For Research Use only

Handling

Concentration: Lot specific

Buffer: BARD1 antibody in PBS (3.0 mM KCl, 1.5 mM KH₂ PO₄, 140 mM NaCl, 8.0 mM Na₂ HPO₄ (pH 7.4)) containing 1 % bovine serum albumin (BSA) and 0.05 % sodium azide (NaN₃).

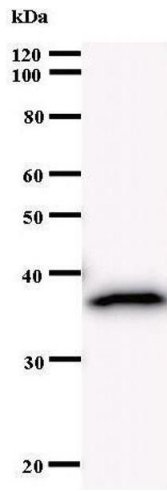
Preservative: Sodium azide

Precaution of Use: This product contains Sodium Azide: a POISONOUS AND HAZARDOUS SUBSTANCE, which should be handled by trained staff only.

Handling Advice: Avoid repeated freeze/thaw cycles.
Dilute only prior to immediate use.

Storage: 4 °C/-20 °C

Storage Comment: Store at 2-8 °C for up to one year. We recommend long term storage at -20 °C.



Western Blotting

Image 1.