

Datasheet for ABIN931003  
**anti-CHD6 antibody**

2 Images



[Go to Product page](#)

## Overview

Quantity:	100 µg
Target:	CHD6
Reactivity:	Human
Host:	Mouse
Clonality:	Monoclonal
Conjugate:	This CHD6 antibody is un-conjugated
Application:	Western Blotting (WB), Dot Blot (DB), Immunocytochemistry (ICC)

## Product Details

Immunogen:	CHD6 antibody was raised in mouse using recombinant Human Chromodomain Helicase Dna Binding Protein 6 (Chd6)
Clone:	2174C2a
Isotype:	IgG1
Cross-Reactivity:	Human
Cross-Reactivity (Details):	Other species not studied.
Purification:	Protein G affinity chromatography

## Target Details

Target:	CHD6
Alternative Name:	CHD6 ( <a href="#">CHD6 Products</a> )

## Target Details

---

**Background:** Chromosomal DNA of eukaryotic cells is compacted by nuclear proteins to form chromatin, an organized nucleoprotein structure that can inhibit gene expression. Several multisubunit protein complexes exist to remodel the chromatin to allow patterns of cell type-specific gene expression. The protein encoded by this gene is thought to be a core member of one or more of these complexes. The encoded protein, which is a member of the SNF2/RAD54 helicase family, contains two chromodomains, a helicase domain, and an ATPase domain. Synonyms: Monoclonal CHD6 antibody, Anti-CHD6 antibody, Chromodomain helicase DNA binding protein 6 antibody, CHD5 antibody, RIGB antibody, KIAA1335 antibody.

**Pathways:** [Chromatin Binding](#)

## Application Details

---

**Application Notes:** WB: 0.2-2 µg/mL, ICC: 2-100 µg/mL  
Optimal conditions should be determined by the investigator.

**Restrictions:** For Research Use only

## Handling

---

**Concentration:** Lot specific

**Buffer:** CHD6 antibody in PBS (3.0 mM KCl, 1.5 mM KH<sub>2</sub> PO<sub>4</sub>, 140 mM NaCl, 8.0 mM Na<sub>2</sub> HPO<sub>4</sub> (pH 7.4)) containing 1 % bovine serum albumin (BSA) and 0.05 % sodium azide (NaN<sub>3</sub>).

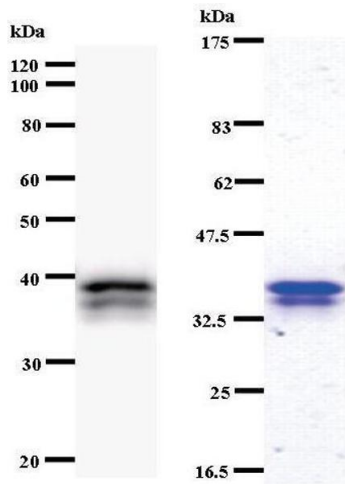
**Preservative:** Sodium azide

**Precaution of Use:** This product contains Sodium Azide: a POISONOUS AND HAZARDOUS SUBSTANCE, which should be handled by trained staff only.

**Handling Advice:** Avoid repeated freeze/thaw cycles.  
Dilute only prior to immediate use.

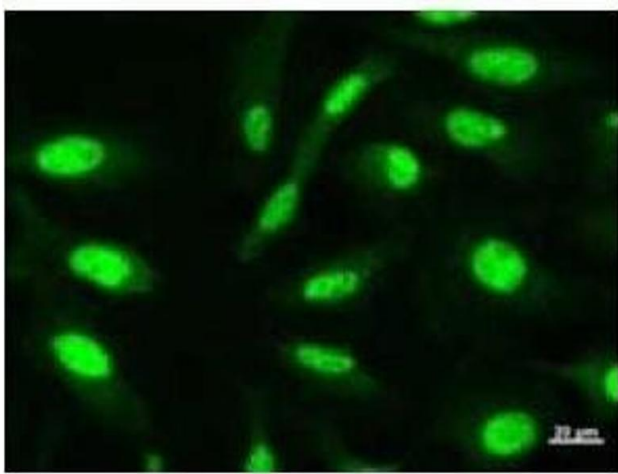
**Storage:** 4 °C/-20 °C

**Storage Comment:** Store at 2-8 °C for up to one year. We recommend long term storage at -20 °C.



### Western Blotting

**Image 1.** Left: CHD6 staining. Right: Coomassie Blue staining of immunized recombinant protein.



### Immunofluorescence

**Image 2.** Immunostaining analysis in HeLa cells. HeLa cells were fixed with 4% paraformaldehyde and permeabilized with 0.01% Triton-X100 in PBS. The cells were immunostained with anti-CHD6 antibody.