

Datasheet for ABIN931006

anti-BCL9 antibody[Go to Product page](#)**1** Image

Overview

Quantity:	100 µg
Target:	BCL9
Reactivity:	Human
Host:	Mouse
Clonality:	Monoclonal
Conjugate:	This BCL9 antibody is un-conjugated
Application:	Dot Blot (DB)

Product Details

Immunogen:	BCL9 antibody was raised in mouse using recombinant Human B-Cell ClI/Lymphoma 9 (Bcl9)
Clone:	2071C3a
Isotype:	IgG1
Cross-Reactivity:	Human
Cross-Reactivity (Details):	Other species not studied.
Purification:	Protein G affinity chromatography

Target Details

Target:	BCL9
Alternative Name:	BCL9 (BCL9 Products)
Background:	B-cell CLL/lymphoma 9 encodes a protein that in humans is encoded by the BCL9 gene. BCL9

Target Details

is associated with B-cell acute lymphoblastic leukemia. It may be a target of translocation in B-cell malignancies with abnormalities of 1q21. Its function is unknown. The overexpression of BCL9 may be of pathogenic significance in B-cell malignancies. Synonyms: Monoclonal BCL9 antibody, Anti-BCL9 antibody, B-cell CLL/lymphoma 9 protein antibody, LGS antibody, MGC131591 antibody.

Pathways: [Stem Cell Maintenance](#)

Application Details

Application Notes: Optimal conditions should be determined by the investigator.

Restrictions: For Research Use only

Handling

Concentration: Lot specific

Buffer: BCL9 antibody in PBS (3.0 mM KCl, 1.5 mM KH₂ PO₄, 140 mM NaCl, 8.0 mM Na₂ HPO₄ (pH 7.4)) containing 1 % bovine serum albumin (BSA) and 0.05 % sodium azide (NaN₃).

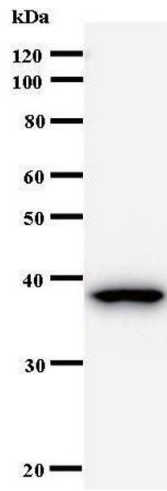
Preservative: Sodium azide

Precaution of Use: This product contains Sodium Azide: a POISONOUS AND HAZARDOUS SUBSTANCE, which should be handled by trained staff only.

Handling Advice: Avoid repeated freeze/thaw cycles.
Dilute only prior to immediate use.

Storage: 4 °C/-20 °C

Storage Comment: Store at 2-8 °C for up to one year. We recommend long term storage at -20 °C.



Western Blotting

Image 1.