

Datasheet for ABIN931010  
**anti-CRSP-2 antibody**



[Go to Product page](#)

1 Image

## Overview

Quantity:	100 µg
Target:	CRSP-2
Reactivity:	Human
Host:	Mouse
Clonality:	Monoclonal
Conjugate:	This CRSP-2 antibody is un-conjugated
Application:	Dot Blot (DB)

## Product Details

Immunogen:	CRSP2 antibody was raised in mouse using recombinant Human Cofactor Required For Sp1 Transcriptional Activation, Subunit 2, 150 Kda (Crsp2)
Clone:	2214C1a
Isotype:	IgG1
Cross-Reactivity:	Human
Cross-Reactivity (Details):	Other species not studied.
Purification:	Protein G affinity chromatography

## Target Details

Target:	CRSP-2
Alternative Name:	CRSP2

## Target Details

---

**Background:** The activation of gene transcription is a multistep process that is triggered by factors that recognize transcriptional enhancer sites in DNA. These factors work with co-activators to direct transcriptional initiation by the RNA polymerase II apparatus. The protein encoded by this gene is a subunit of the CRSP (cofactor required for SP1 activation) complex, which, along with TFIID, is required for efficient activation by SP1. This protein is also a component of other multisubunit complexes e.g. thyroid hormone receptor-(TR-) associated proteins which interact with TR and facilitate TR function on DNA templates in conjunction with initiation factors and cofactors. This protein contains a bipartite nuclear localization signal. This gene is known to escape chromosome X-inactivation. Synonyms: Monoclonal CRSP2 antibody, Anti-CRSP2 antibody, Cofactor required for Sp1 transcriptional activation subunit 2 antibody, CSRP antibody, RGR1 antibody, EXLM1 antibody, MED14 antibody, CXorf4 antibody, CRSP150 antibody, DRIP150 antibody, TRAP170 antibody, MGC104513 antibody.

## Application Details

---

**Application Notes:** Optimal conditions should be determined by the investigator.

**Restrictions:** For Research Use only

## Handling

---

**Concentration:** Lot specific

**Buffer:** CRSP2 antibody in PBS (3.0 mM KCl, 1.5 mM KH<sub>2</sub> PO<sub>4</sub>, 140 mM NaCl, 8.0 mM Na<sub>2</sub> HPO<sub>4</sub> (pH 7.4)) containing 1 % bovine serum albumin (BSA) and 0.05 % sodium azide (NaN<sub>3</sub>).

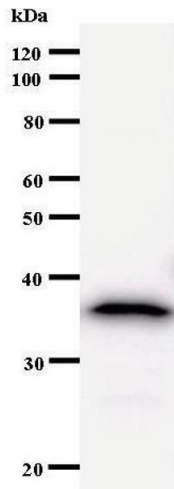
**Preservative:** Sodium azide

**Precaution of Use:** This product contains Sodium Azide: a POISONOUS AND HAZARDOUS SUBSTANCE, which should be handled by trained staff only.

**Handling Advice:** Avoid repeated freeze/thaw cycles.  
Dilute only prior to immediate use.

**Storage:** 4 °C/-20 °C

**Storage Comment:** Store at 2-8 °C for up to one year. We recommend long term storage at -20 °C.



### Western Blotting

Image 1.