

Datasheet for ABIN931011
anti-MED17 antibody



[Go to Product page](#)

1 Image

Overview

Quantity:	100 µg
Target:	MED17
Reactivity:	Human
Host:	Mouse
Clonality:	Monoclonal
Conjugate:	This MED17 antibody is un-conjugated
Application:	Dot Blot (DB)

Product Details

Immunogen:	CRSP6 antibody was raised in mouse using recombinant Human Cofactor Required For Sp1 Transcriptional Activation, Subunit 6, 77 Kda (Crsp6)
Clone:	2215C3a
Isotype:	IgG1
Cross-Reactivity:	Human
Cross-Reactivity (Details):	Other species not studied.
Purification:	Protein G affinity chromatography

Target Details

Target:	MED17
Alternative Name:	CRSP6 (MED17 Products)

Target Details

Background: CRSP6 is a component of the Mediator complex, a coactivator involved in the regulated transcription of nearly all RNA polymerase II-dependent genes. Mediator functions as a bridge to convey information from gene-specific regulatory proteins to the basal RNA polymerase II transcription machinery. Mediator is recruited to promoters by direct interactions with regulatory proteins and serves as a scaffold for the assembly of a functional preinitiation complex with RNA polymerase II and the general transcription factors. Synonyms: Monoclonal CRSP6 antibody, Anti-CRSP6 antibody, Cofactor required for Sp1 transcriptional activation, subunit 6 antibody, MED17 antibody, CRSP77 antibody, DRIP80 antibody, TRAP80 antibody, FLJ10812 antibody.

Pathways: [Intracellular Steroid Hormone Receptor Signaling Pathway](#), [Stem Cell Maintenance](#), [Regulation of Lipid Metabolism by PPARalpha](#)

Application Details

Application Notes: Optimal conditions should be determined by the investigator.

Restrictions: For Research Use only

Handling

Concentration: Lot specific

Buffer: CRSP6 antibody in PBS (3.0 mM KCl, 1.5 mM KH₂ PO₄, 140 mM NaCl, 8.0 mM Na₂ HPO₄ (pH 7.4)) containing 1 % bovine serum albumin (BSA) and 0.05 % sodium azide (NaN₃).

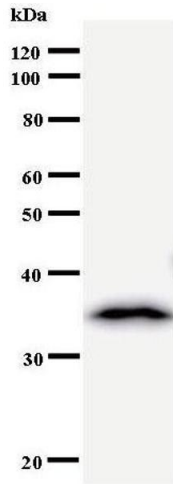
Preservative: Sodium azide

Precaution of Use: This product contains Sodium Azide: a POISONOUS AND HAZARDOUS SUBSTANCE, which should be handled by trained staff only.

Handling Advice: Avoid repeated freeze/thaw cycles.
Dilute only prior to immediate use.

Storage: 4 °C/-20 °C

Storage Comment: Store at 2-8 °C for up to one year. We recommend long term storage at -20 °C.



Western Blotting

Image 1.